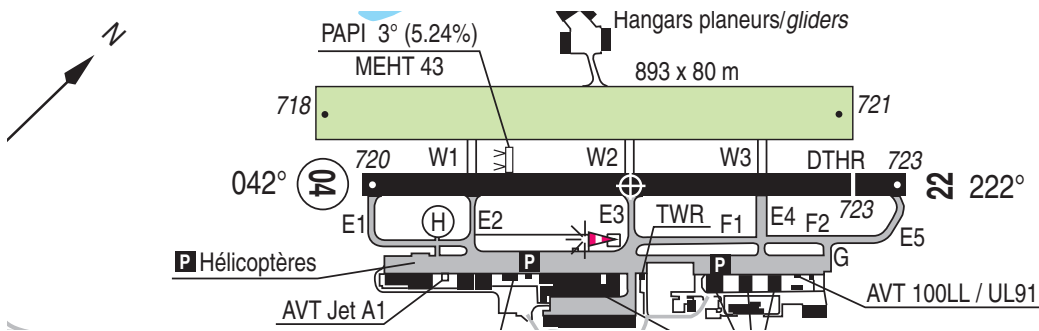


LFLG Closed Circuit Patterns



Pilot: Le Versoud Ground, Robin F-GF-PT on the apron. Good Morning

Ground: F-GTPT, Le Versoud Ground. Pass your message

Pilot: Le Versoud Ground, Robin F-GTPT, request taxi to Runway 04 for close-circuit patterns with information India

Ground: F-PT Taxi to Holding Point E1 Runway 04 contact Le Versoud tower when ready on 121.0

Pilot: Taxi to Holding Point E1 Runway 04, contact Le Versoud tower when ready on 121.0, F-PT

...

Pilot: Le Versoud Tower, Robin F-GTPT at Holding Point E1 Runway 04. Ready for Departure.

Tower: F-PT, Le Versoud Tower. Maintain position.

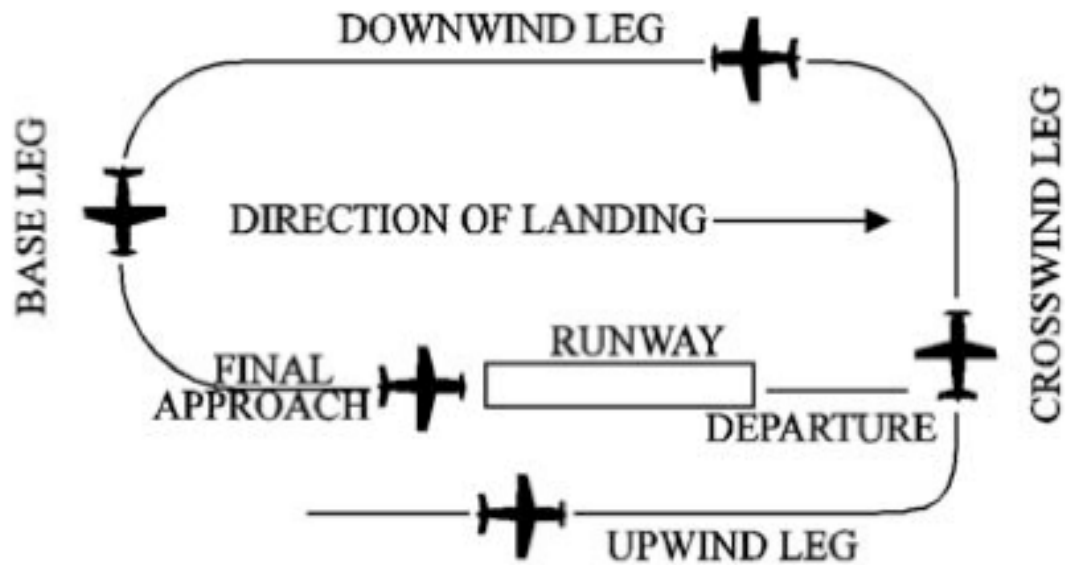
Pilot: Maintain position, F-PT

Tower: F-PT Behind the aircraft on short final line up Runway 04 and wait, Behind

Pilot: Behind the aircraft on short final, line up Runway 04 and wait, Behind, Robin F-PT

Tower: F-PT, Runway 04, Cleared for takeoff, wind calm, report Runway 04 downwind abeam the tower

Pilot: Taking off on Runway 04, will report downwind abeam the tower, F-PT



Pilot: Robin F-PT left hand downwind Runway 04.

Tower: F-PT, Number 3, Report turning base

Pilot: Number 3, Report turning base, F-PT

Pilot: F-PT turning base

Tower: F-PT, number 2, landing aircraft on short final, report final.

Pilot: Number 2, report final, F-PT

Pilot: F-PT on final, runway 04 for a touch and go

Tower: F-PT, cleared for touch and go, wind 030, 5 kts, report downwind runway 04.

Pilot: Report downwind runway 04 F-PT

Pilot: F-PT downwind Runway 04, full stop

Pilot: F-PT Runway 04 cleared for the option.