



Aéro Club Dauphiné
Aviation English Master Class
Session 5

James Crowley and Jean Yves Larnaudie
and the ACD FCL055 team

<http://crowley-coutaz.fr/jlc/FCL055>

Session Planning (*revised*)



17 March	The FCL055 Rating, Course structure, Presentation of Participants, Information resources, ATIS, AWOS and ASOS
24 March	Formation of flight crews, ATIS practice, Sample preflight briefings
31 March	Preflight Briefings
7 April	Radio Communication rules and practice for Taxi and Departure
14 April	ACD – General Assembly (no session)
21 April*	Departure Airfield briefings. Radio Practice for departure and taxi
28 April	Phraseology for Take-off Landing and flying the pattern, Radio Practice
5 May	Enroute Position Reporting, Radio Practice
12 May	Abnormal and Emergency Situation, Human Factors, war stories
19 May	Arrival, Landing, Fuel and Parking, Arrival Briefings, Radio Practice:
26 May	FCL 055 VFR practice Exam

*Jim in Texas

Homework for this Session

Write out the complete dialog for ATIS, Initial contact, taxi clearance, taxi and departure for your departure airfield. Send me a copy for use in our next lesson. Practice the dialog with your team-mate.

Session plan: Each team gives a briefing for the departure airfield and then plays the script.

Radio Practice Speaking Order

No.	Pilots
1	JA
2	HBF
3	FB
4	JCE
5	JG
6	JYL
7	HM
8	FM
9	PP
10	GRP
11	JT1
12	JT2
13	JPT
	ATC
1	MP
2	MS

Flight Teams

Team	Pilots	Departure - Destination
1	FB and JYL	LFHE - LFMD
2	JA and JCE	LIMA - LFLG
3	GYP	EGLK - LFLS
4	JG and HM	LIMW - LSZL
5	FM and HBF	LFLG - LSGL
6	PP and JT1	LSGL - EGPF
7	JT2 and JPT	LFLG to Chamois (IT)

Team 1: LFHE

ATTERRISSAGE A VUE Visual landing

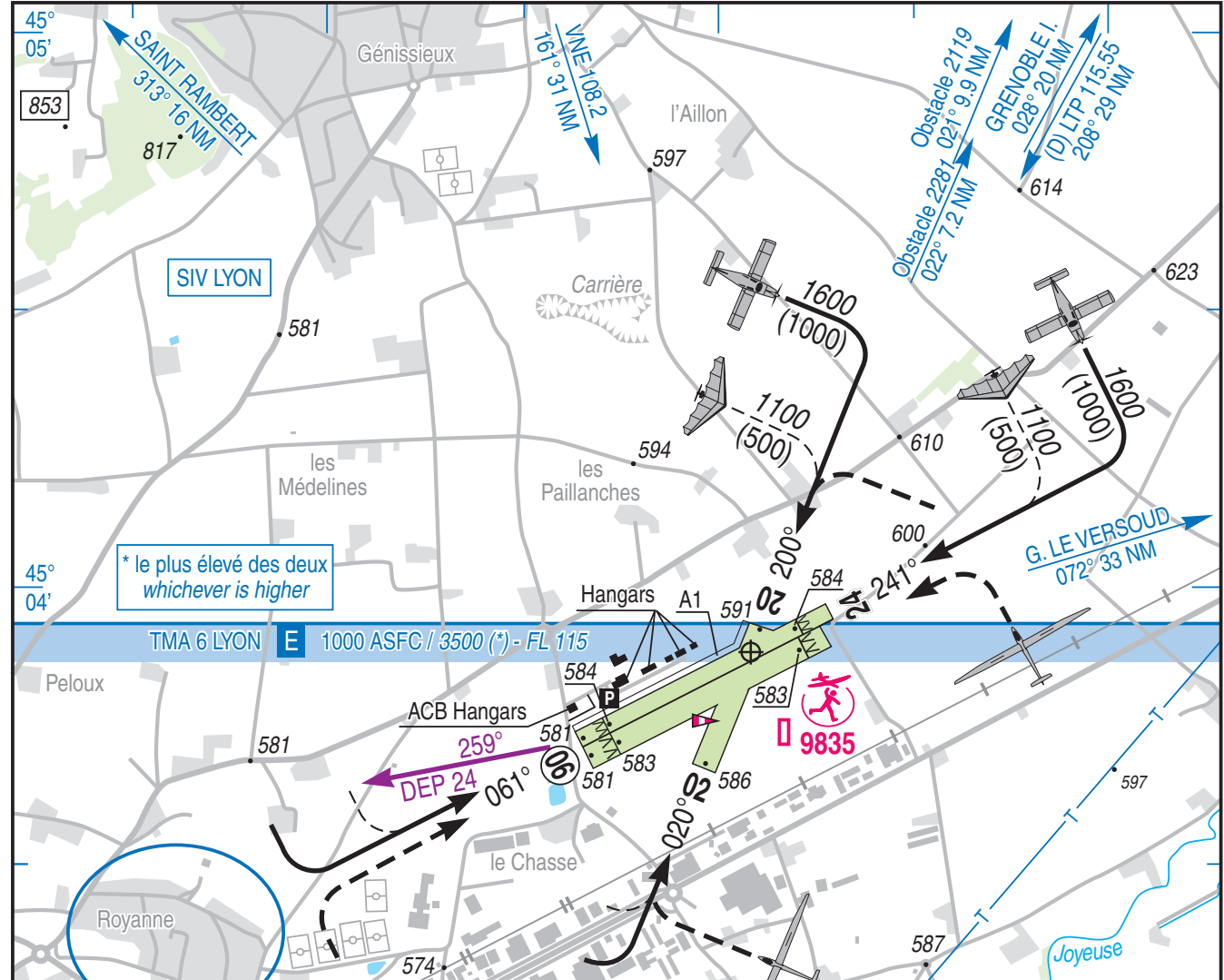
Ouvert à la CAP
Public air traffic

ROMANS SAINT PAUL
AD 2 LFHE ATT 01

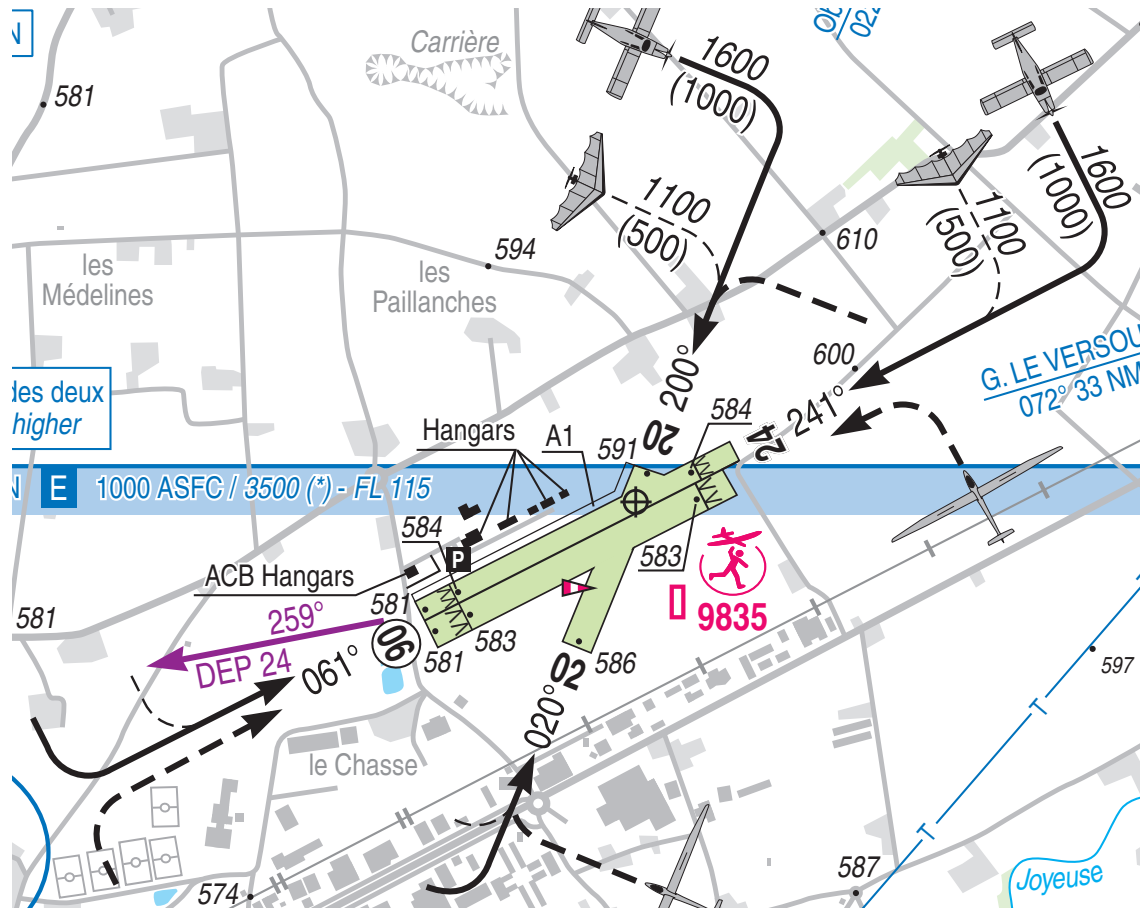
15 AUG 19

					ALT AD : 595 (21 hPa)	LFHE VAR : 1° E (15)
	CABLE				LAT : 45 03 53 N	
					LONG : 005 06 05 E	

APP : NIL
TWR : NIL
A/A : 118.8



Team 1: LFHE – LFMD



RWY	QFU	Dimensions Dimension	Nature Surface	Résistance Strength	TODA	ASDA	LDA
06L 24R ACFT	061 241	940 x 50	Non revêtue Unpaved	-	940 940	940 940	820 805
06R Planeurs 24L Gliders	061 241	890 x 80	Non revêtue Unpaved	-	890 890	890 890	770 751
02 20	020 200	500 x 80	Non revêtue Unpaved	-			500 500
Aides lumineuses : NIL				Lighting aids : NIL			

Team 1: LFHE - LFMD

ROMANS traffic, [Good Day], Robin F-HGPC, at apron, for a VFR flight to Cannes, 4 POB, taxiing to runway 06 L, will report overhead the airport, then direct to NE

ROMANS traffic, F-PC, at holding point 06

ROMANS traffic, F-PC, lining-up and taking off runway 06 L, with a left climbing turn

ROMANS traffic, F-PC, overhead airfield, 2000 ft, heading to NE,

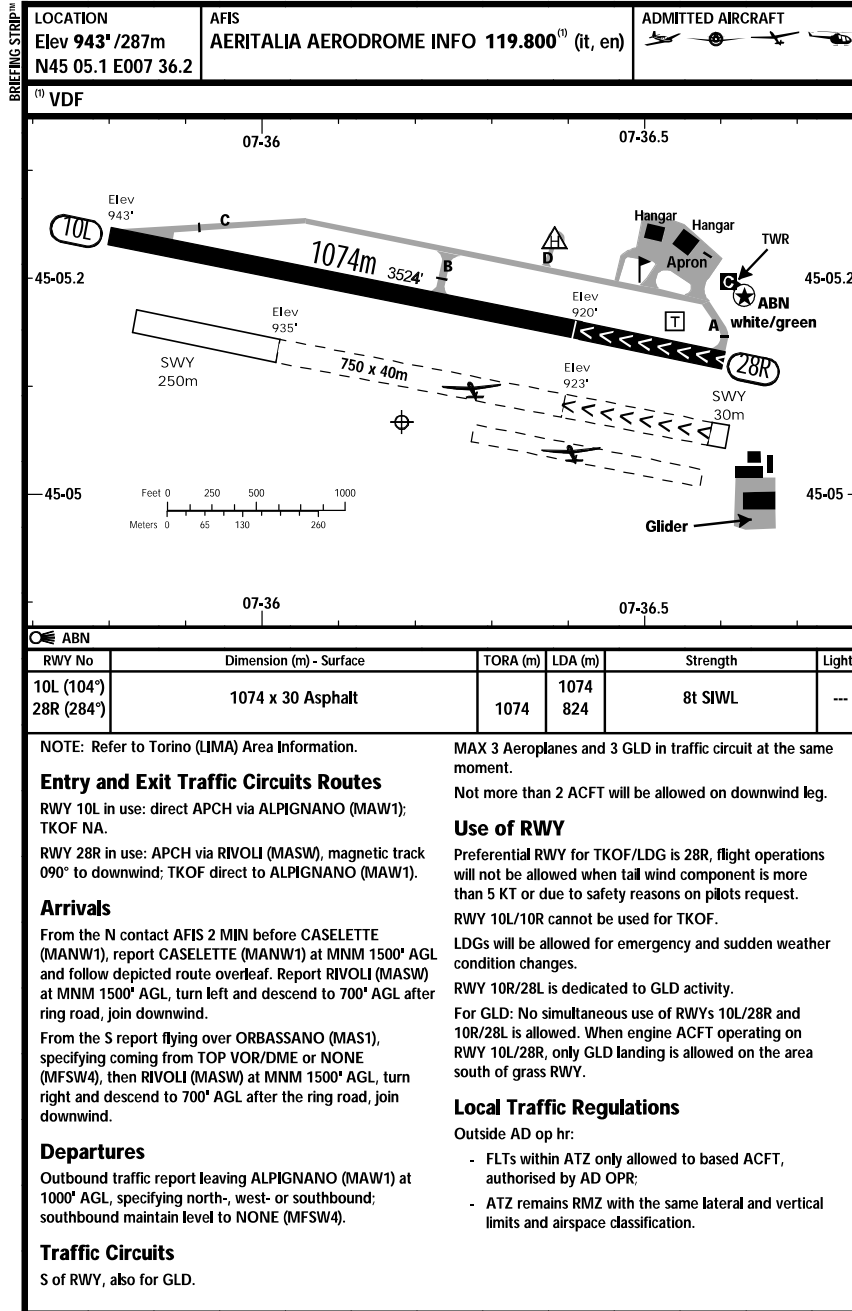
ROMANS traffic, F-PC, abeam NE, at 3800 ft, leaving the frequency,

Team 2: LIMA - LFLG

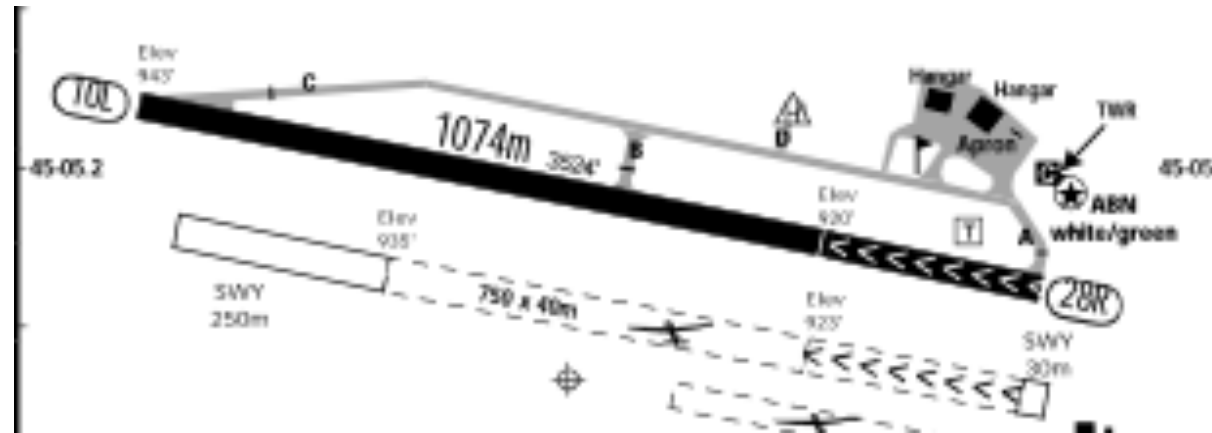
LIMA
AERITALIA

27 JUL 18 (29-2)

TORINO
ITALY

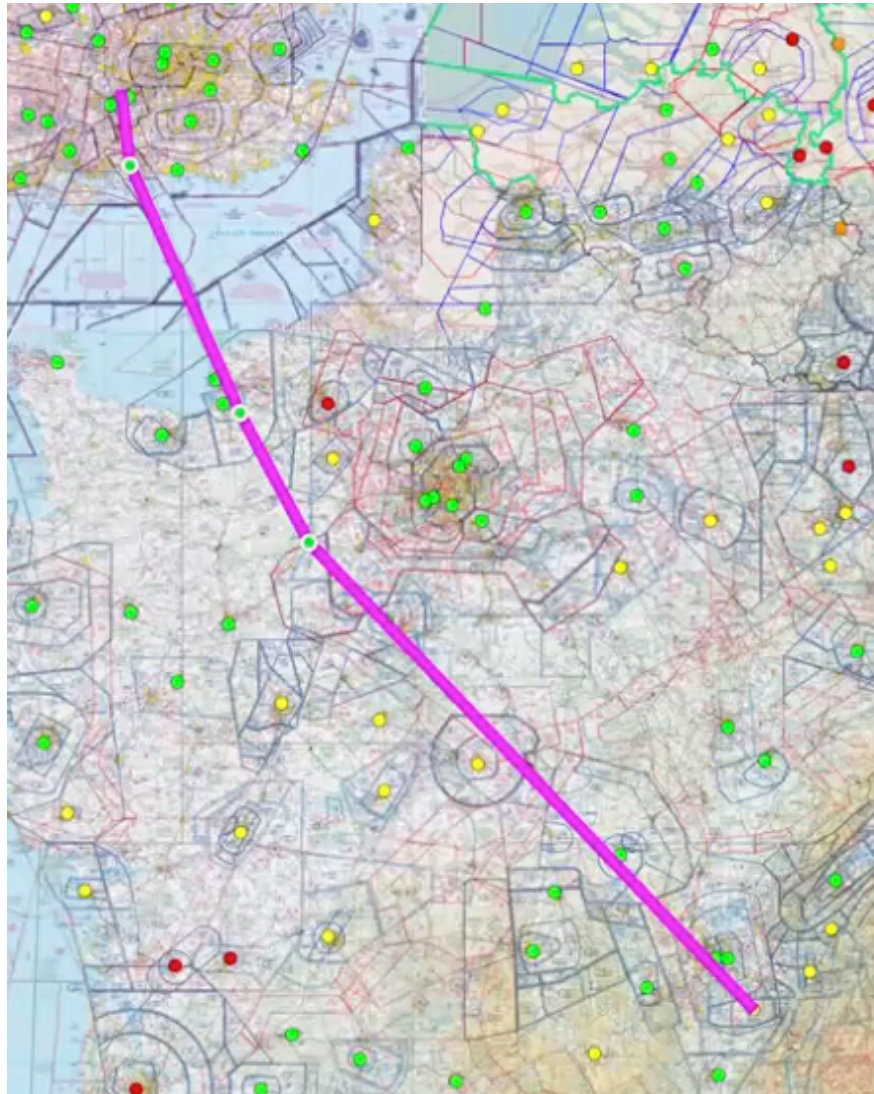


Team 2: LIMA - LFLG



- Pilot: Torino **Aeritalia**, Europa F-PSCZ, Good Morning
- AFIS: F-CZ, Aeritalia Good Morning, Pass your message
- Pilot: F-CZ, VFR flight from Torino Aeritalia to LFLG with FPL, on the grass parking in front of the tower, 2 POB, ready to taxi
- AFIS: F-CZ, Taxi to Holding Point Runway 28R via Taxiway A, call at Holding Point when ready on this frequency
- Pilot: Taxi to Holding Point 28R, report when ready, F-CZ
- Pilot: At Holding point 28R, ready for departure, F-CZ
- AFIS: F-CZ, wind 320 degrees 12 kts, line-up Runway 28R, cleared for take-off, climb & maintain 1000ft AGL, report passing MAW2 at 1000ft AGL
- Pilot: F-CZ cleared for take-off, report passing MAW2 at 1000ft AGL, F-CZ

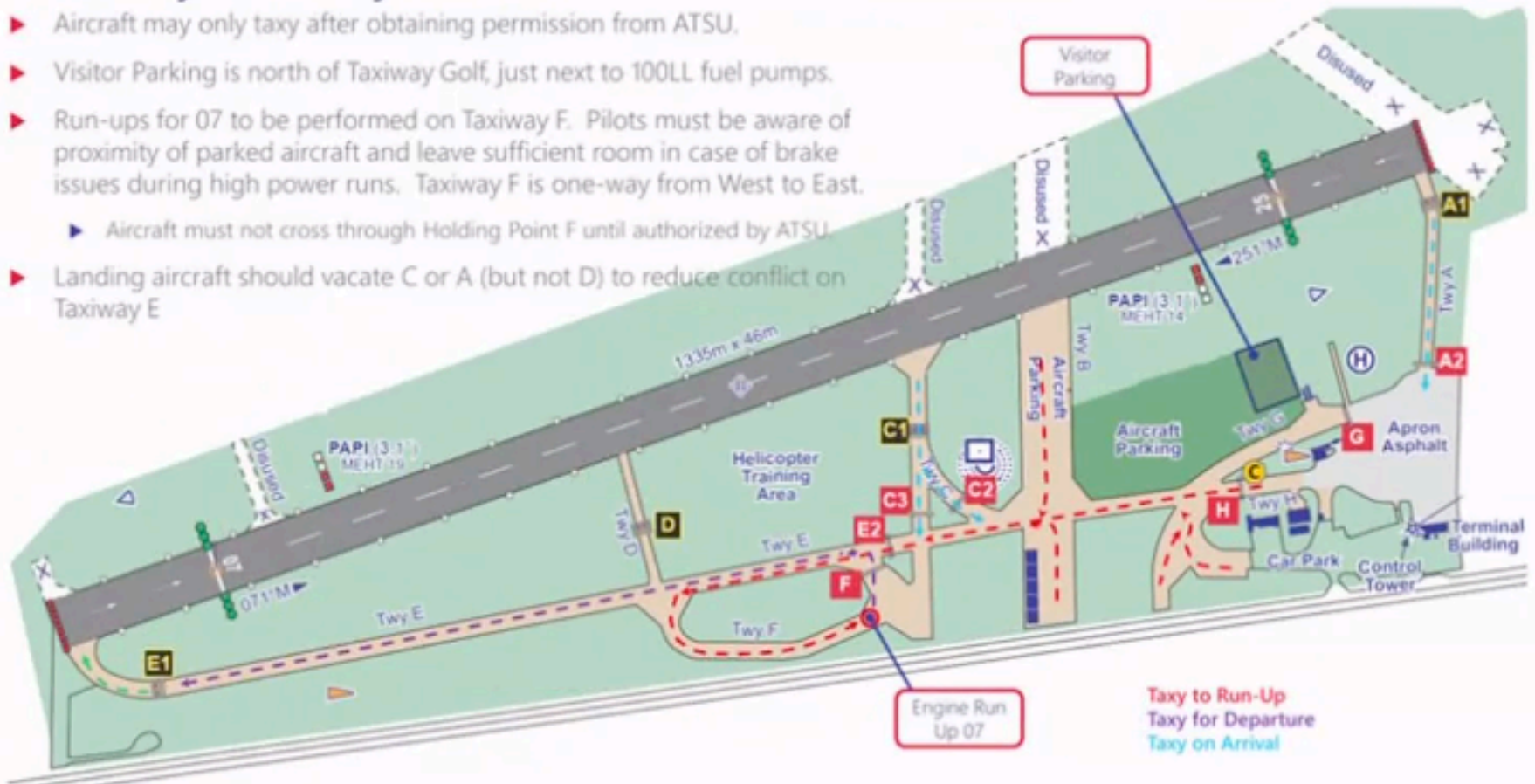
Team 3: EGLK to LFLS with F-GGSL



Team 3: EGLK to LFLS with F-GGSL

Runway 07 Taxi Routes

- ▶ Aircraft may only taxi after obtaining permission from ATSU.
- ▶ Visitor Parking is north of Taxiway Golf, just next to 100LL fuel pumps.
- ▶ Run-ups for 07 to be performed on Taxiway F. Pilots must be aware of proximity of parked aircraft and leave sufficient room in case of brake issues during high power runs. Taxiway F is one-way from West to East.
 - ▶ Aircraft must not cross through Holding Point F until authorized by ATSU.
- ▶ Landing aircraft should vacate C or A (but not D) to reduce conflict on Taxiway E



Team 4: LIMW to LSZL with F-GTPT

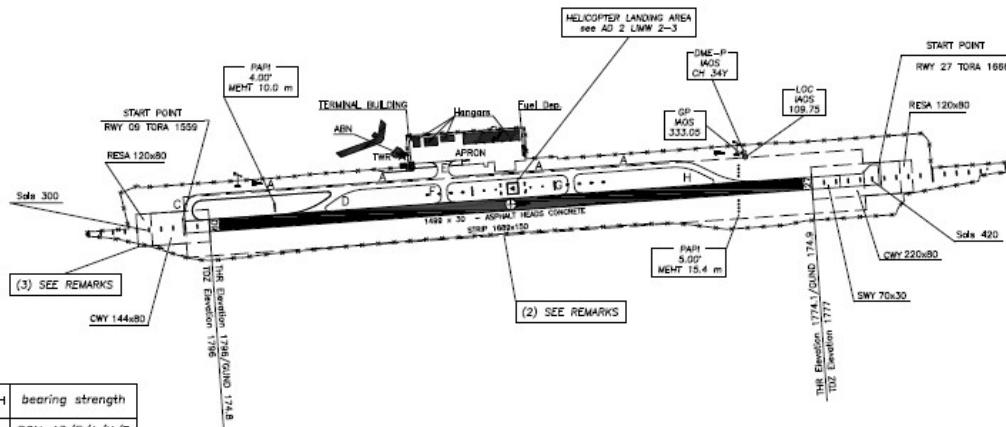
AERODROME CHART ICAO

AIP - Italia

AD 2 LIMW 2-1

RWY	QFU	THR	bearing strength	Bearings are magnetic Distances in metres Elevation in ft AMSL Coordinates WGS84	AFIS 119.950 CH 119.955
09	084°	N 45°44'18.61" E 007°21'28.70"	PCN 46/F/A/X/T		
27	264°	N 45°44'30.89" E 007°22'37.75"			

AD ELEV 1796	AOSTA	
APRON ELEV 1785	L I M W	45°44'18" N 007°22'03" E

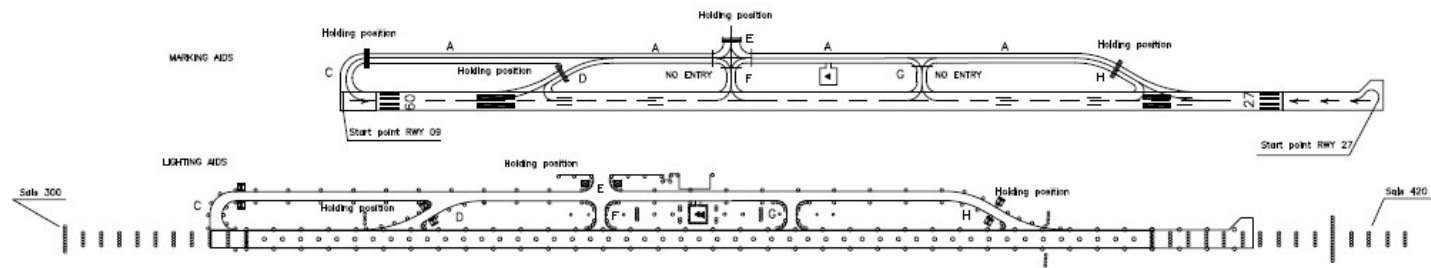


Annual rate of change 5' E

- REMARKS**
- (1) PAPI REMARKS:
PAPI RWYs 09/27: PROTECTION 5 KM
PAPI RWY 27: OFF SET 3.6'
 - (2) FOR 400 M ALONG THE SOUTH SIDE STRIP DIMENSION IN WIDTH IS REDUCED TO 147 M
 - (3) ON THE SOUTH-WEST SIDE OF RESA, TRIANGULAR PORTION OF DIMENSIONS 25x8 M IS NOT AVAILABLE

CHANGE: Box FREQ updated

TWY IDENT	WIDTH	bearing strength
A	15	PCN 43/F/A/X/T
C	20	PCN 47/F/A/X/T
D	15	PCN 45/F/A/X/T
E	15	PCN 43/F/A/X/T
F	15	PCN 36/F/A/X/T
G	15	PCN 35/F/A/X/T
H	15	PCN 41/F/A/X/T



Team 4: LIMW - LSZL

ATIS:

>< None, contact AFIS 119.955

Initial contact:

>> AFIS 119.955

F-GTPT: F-GTPT, Aosta information, good day, with requests.

AFIS: F-GTPT, go ahead

F-GTPT: F-GTPT on apron, I'd like to open my VFR flight plan from Aosta to Locarno at 5 minutes past the hour, leaving the ATZ via E1

AFIS: F-GTPT, your flight plan has been activated at 5 minutes past the hour. Departure information, active runway 09, wind 090 18kt, visibility more than 10km, no clouds, temperature 15, dew point 5, QNH 1008, on departure remind to avoid zone P338, sqwak 1640 and monitor Milano NW FMC 134.425, call back when ready to taxi

F-PT: Active runway 09, QNH 1008, thanks for the reminder, sqwak 1640, will monitor 134.425 and call you back when ready, F-GTPT

Team 4: LIMW - LSZL

Taxi clearance:

F-GTPT: F-GTPT ready to taxi

AFIS: F-PT no traffic on taxiways, you can proceed, call back when ready for departure

F-GTPT: Taxiing to holding point C, runway 09 via E A, calling back when ready,
F-PT

Team 4: LIMW - LSZL

Taxi & departure:

F-GTPT: F-PT, at holding point C runway 09, ready for departure

AFIS: F-PT a Cessna turning final, hold short runway 09, confirm you have traffic on final in sight

F-GTPT: Traffic on final in sight, holding short runway 09, F-PT

AFIS: F-PT Preceding traffic has vacated, no other aircraft in the pattern, wind 080 15kt, runway 09, cleared for take-off, call back when leaving the ATZ

F-GTPT: Lining up and cleared for take off runway 09, calling back leaving the ATZ, F-PT

F-GTPT: F-PT over E1, 2000ft, request frequency change

AFIS: F-PT frequency change approved, contact Milano information, 124.925, good bye

F-GTPT: 124.925 Good bye, F-PT

Team 5: LFLG - LSGL

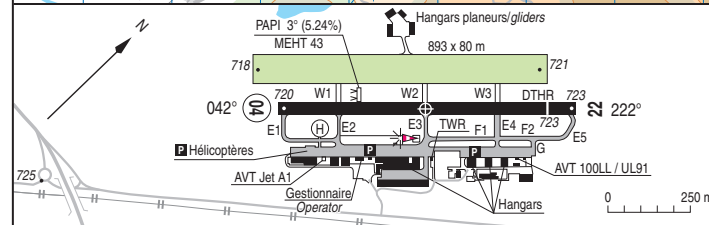
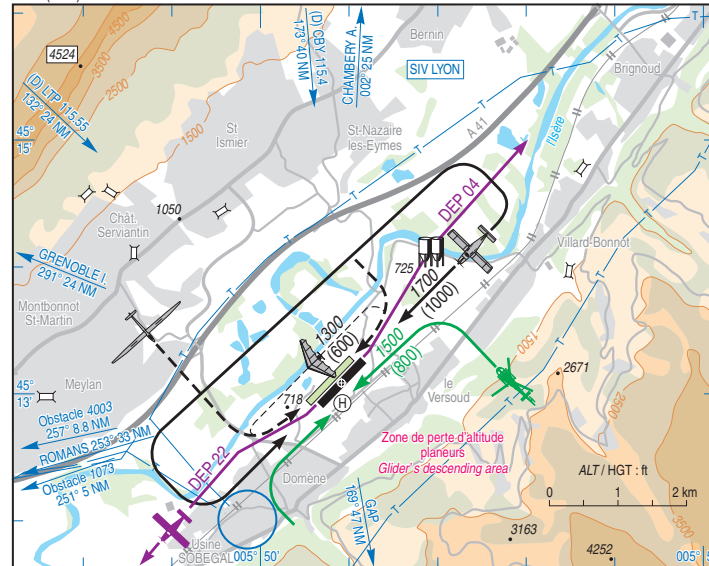
ATERRISSAGE A VUE
Visual landing

Ouvert à la CAP
Public air traffic
09 SEP 2021

GRENOBLE LE VERSOUD
AD 2 LFLG ATT 01

	ALT AD : 724 (26 hPa) LAT : 45 13 05 N LONG : 005 50 55 E	LFLG VAR : 1°E (15)
--	--	-------------------------------

ATIS 125.230 ☎ 04 85 88 10 17
APP : NIL
TWR : 121.000
GND (SOL) : 121.655



RWY	QFU	Dimensions	Nature Surface	Résistance Strength	TODA	ASDA	LDA
04	042	900 x 30	Revêtu Paved	6.3 TRSI	900	900	900
	222				900	900	815

Aides lumineuses : NIL Lighting aids : NIL

Team 5: LFLG - LSGL

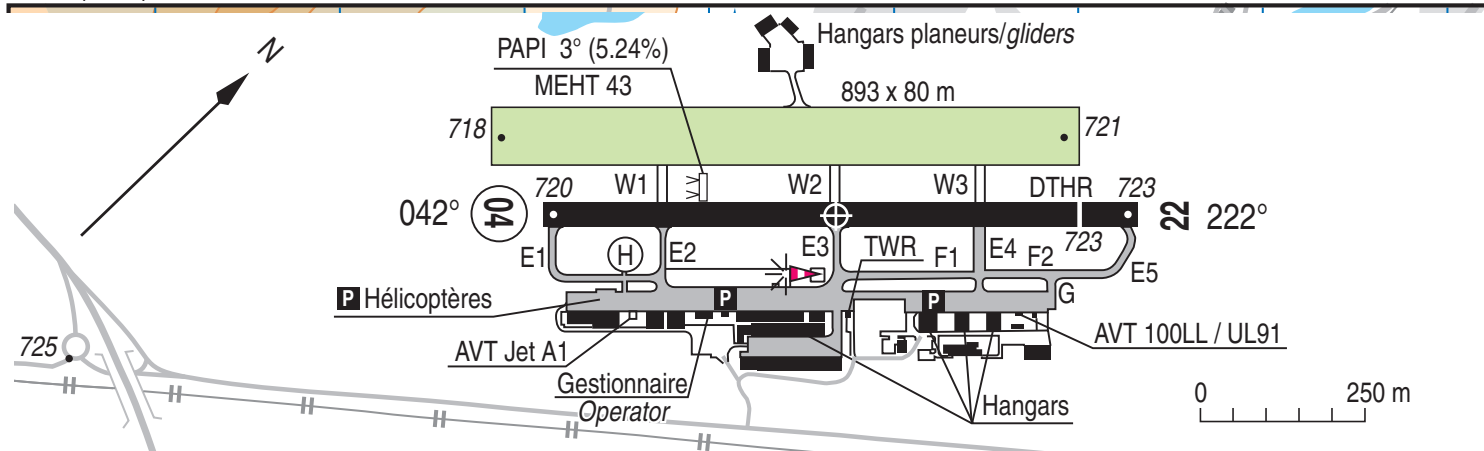
ATTERRISSAGE A VUE
Visual landing

Ouvert à la CAP
Public air traffic
09 SEP 2021

GRENOBLE LE VERSOUD
AD 2 LFLG ATT 01

	ALT AD : 724 (26 hPa) LAT : 45 13 05 N LONG : 005 50 55 E	LFLG VAR : 1°E (15)
--	--	-------------------------------

ATIS 125.230 ☎ 04 85 88 10 17
 APP : NIL
 TWR : 121.000
 GND (SOL) : 121.655

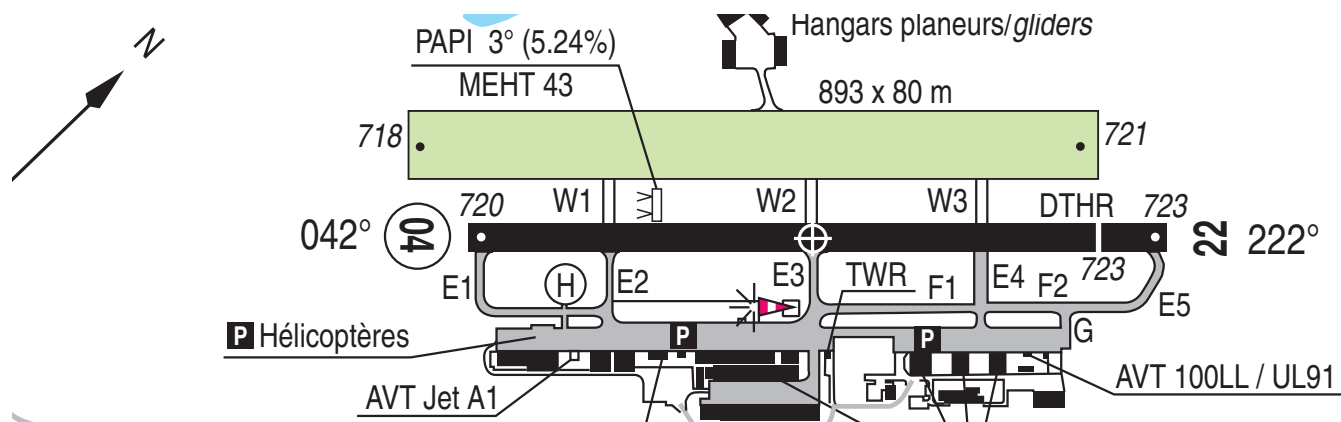


RWY	QFU	Dimensions <i>Dimension</i>	Nature <i>Surface</i>	Résistance <i>Strength</i>	TODA	ASDA	LDA
04	042	900 x 30	Revêtue <i>Paved</i>	6.3 TRSI	900	900	900
22	222				900	900	815

Aides lumineuses : NIL

Lighting aids : NIL

Team 5: LFLG - LSGL



ATIS: This is Le Versoud Information Charlie recorded at 0825 UTC, Runway in use 04, Wind 030 degrees 2 knots, CAVOK, temperature 10, QNH 1020, inform Le Versoud on initial contact that you have received information Charlie

Pilot: Le Versoud Ground, Robin F-HCEN on the apron, good morning

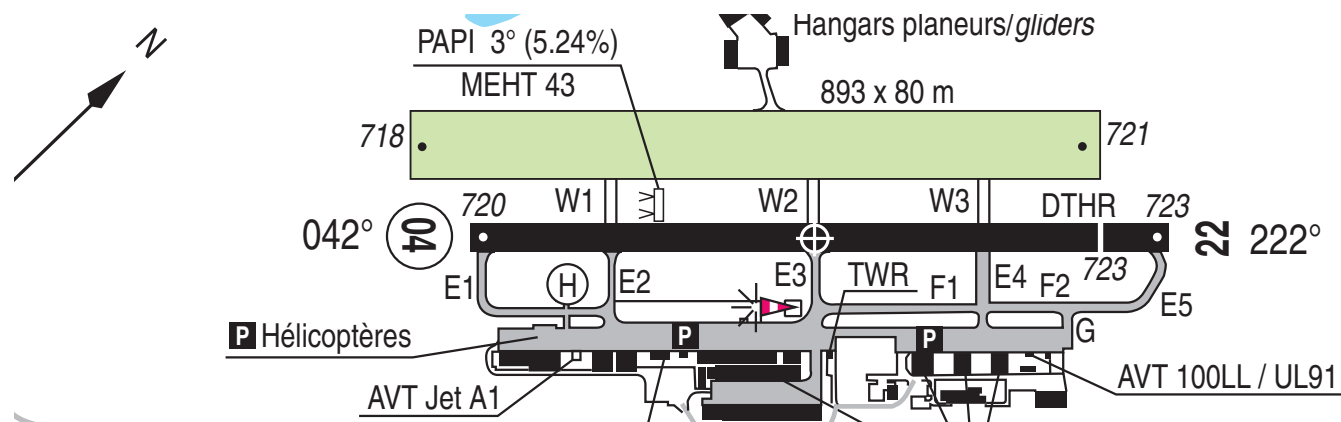
Ground: Ground: Robin F--HCEN, Le Versoud Ground. Pass your message

Pilot: Robin F--HCEN with information Charlie, 2 POB, VFR flight plan to Lausanne LSGL, ready for taxi

Ground: Robin F--HCEN, Le Versoud Ground, Taxi to Holding Point E1 Runway 04 Contact Tower when ready for Departure on 121.0.

Pilot: Taxi to Holding Point E1 Runway 04, Contact Tower when ready for Departure on 121.0.

Team 5: LFLG - LSGL



Pilot: Le Versoud Tower, Robin F--HCEN at Holding Point E1 Runway 04. Ready for Departure.

Tower: Robin F--HCEN Cleared for takeoff, wind calm, report leaving frequency

Pilot: Cleared for takeoff , report leaving frequency, Robin F--HCEN

...

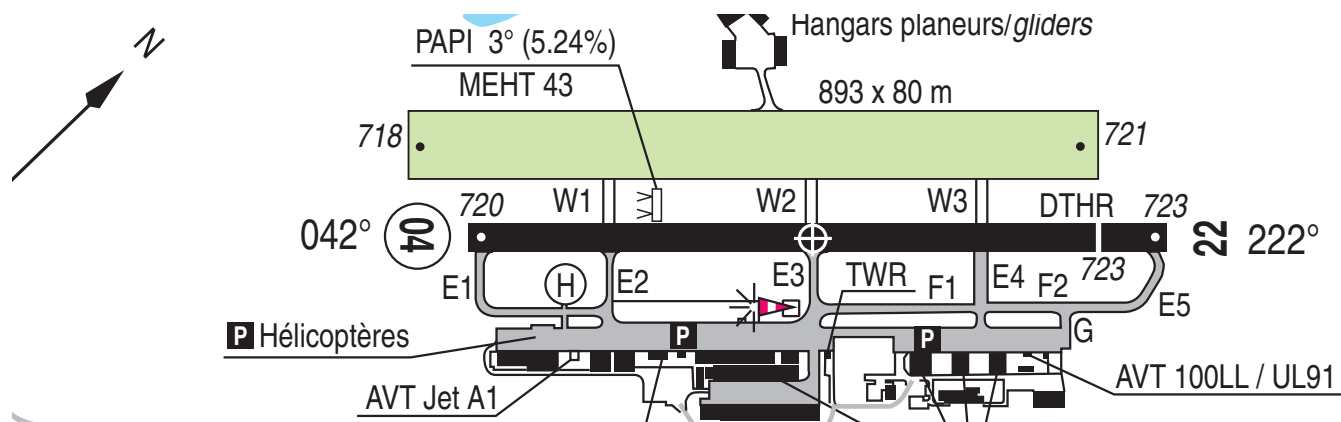
Pilot: Le Versoud Tower, F-HCEN, 2 500 ft, climbing to 5500 ft, abeam Brignoud highway toll to leave frequency

Tower: Robin F--HCEN. Leave frequency and contact Chambéry Info on 123.7, overhead LFLB/SM. Have a good flight

...

Pilot: Leaving frequency and contact Chambéry Info on 123.7 ahead SM. Thanks F-HCEN.

Team 5: LFLG - LSGL



Pilot: Le Versoud Tower, F-HCEN, 2 500 ft, climbing to 5500 ft, abeam Brignoud highway toll to leave frequency

Tower: Robin F--HCEN. Leave frequency and contact Chambery Info on 123.7, overhead LFLB/SM. Have a good flight

Pilot: Leaving frequency and contact Chambery Info on 123.7 ahead SM. Thanks F-HCEN.

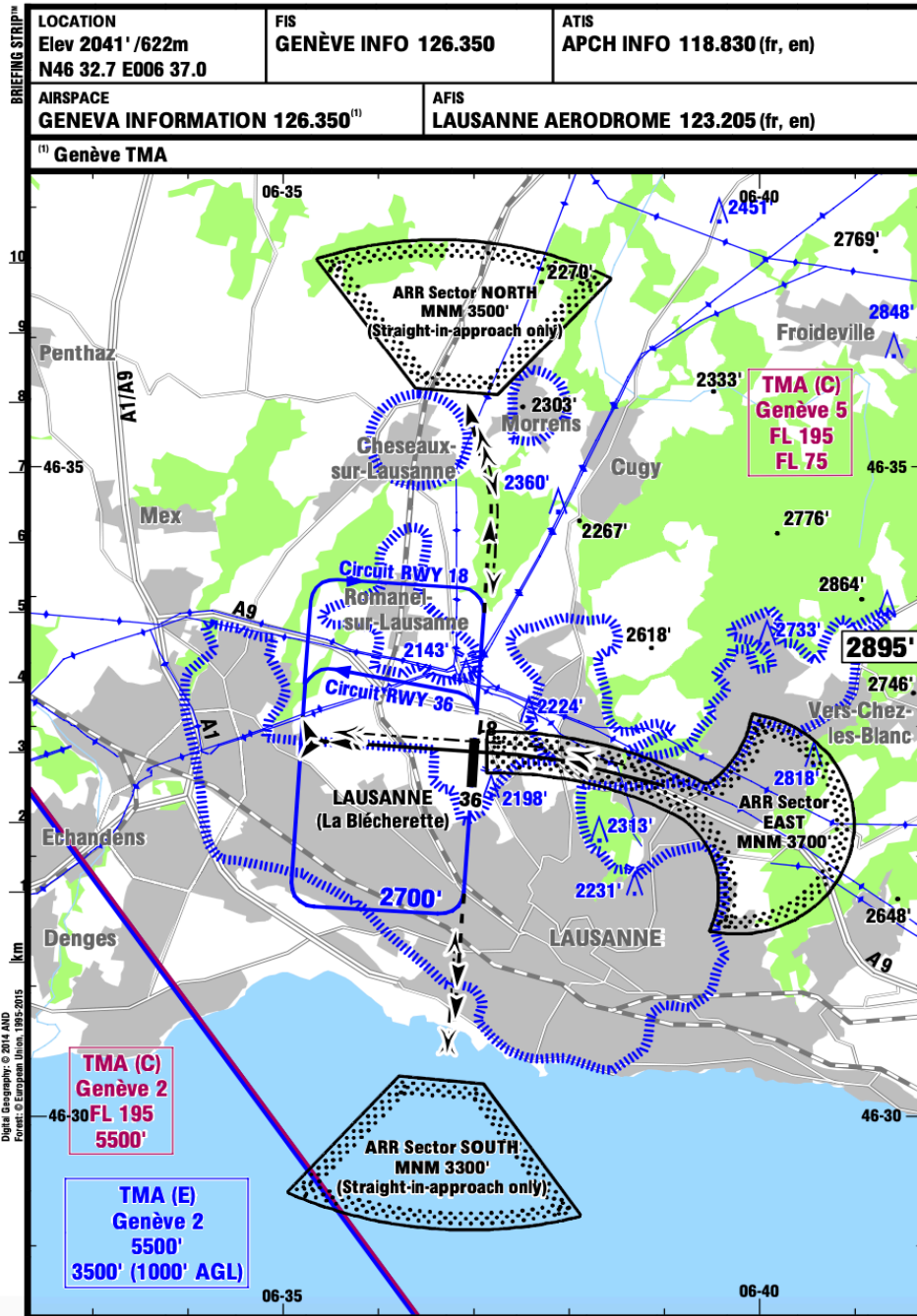
Team 6: Lausanne La Blécherette Airport

La Blécherette Airport is adjacent to the city of Lausanne. As a consequence, rather stringent flight traffic constraints have to be considered. These are mostly noise abatement procedures and limited extension flight areas.

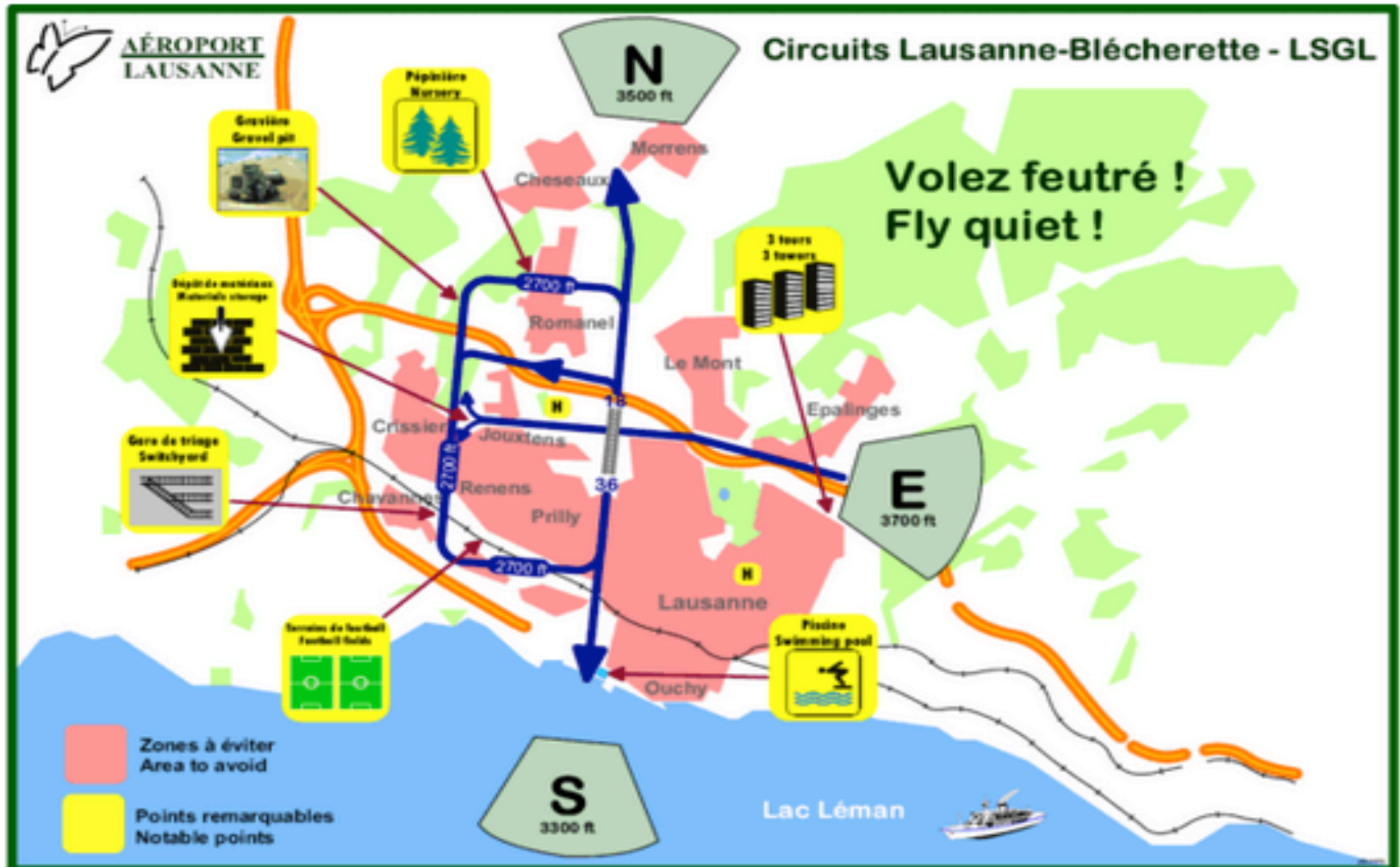


Team 6: Lausanne (Jeppesen Charts)

Three Arrival sectors have been defined for inbound reporting, namely N, E and S. It happens that these three reporting points are quite close to one another, special visual attention is necessary during TKOFF.



Team 6: LSGL - EGPF



Team 6: Lausanne (Jeppesen Charts)

Only one paved runway is available.
It is 18/36 oriented, and goes slightly uphill northbound.

Elevation is 2141ft.

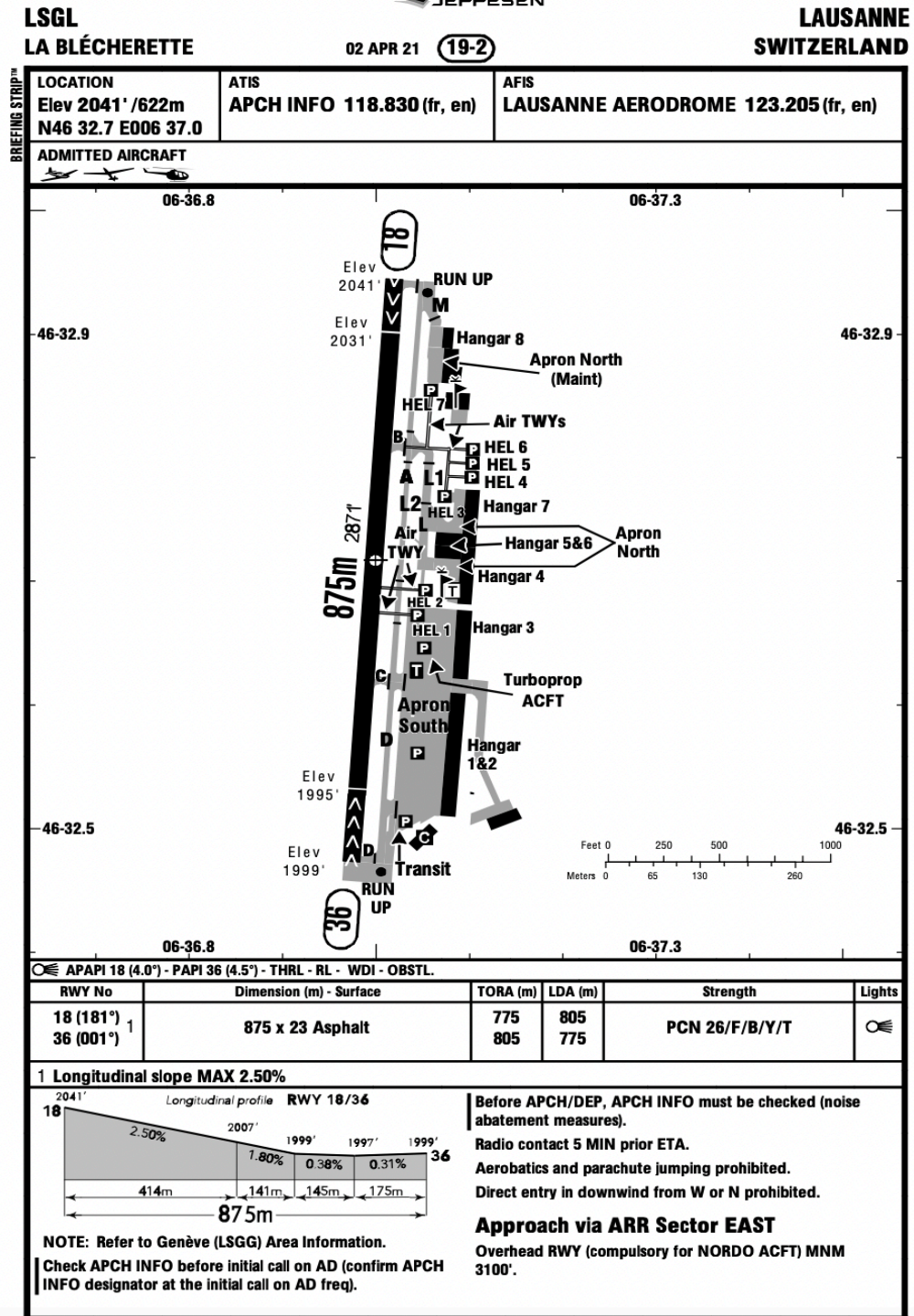
Runway 18 TKOFF TORA is 775m.

Runway 36 TKOFF TORA is 805m.

In the case of departure, the expected preferred runway will be 18.

Three Arrival sectors have been defined for inbound reporting, namely N, E and S.

It happens that these three reporting points are quite close to one another, special visual attention is necessary during TKOFF.



Team 6: LSGL - EGPF



- Pilot:** Lausanne Info, Robin F-GSRE on the apron, request departure information
- Info:** Robin F-GSRE Lausanne Info, Runway in use 18, wind 170 degrees, 2 knots, QNH 1020, temperature 20, dewpoint 10
- Pilot:** Runway in use 18, wind 170 degrees. Robin F-GSRE is a VFR flight plan to Grenoble France, 2 PoB, ready to taxi to holding point M Runway 18 for runup.
- Info:** Robin F-RE Lausanne Info, Taxi to holding point M, runway 18 Contact this frequency when ready for departure.
- Pilot:** Taxing to holding point M will call back on this frequency when ready for departure

Team 6: LSGL - EGPF



Pilot: Lausanne Info, Robin F-RE at holding point M Runway 18, Ready for Departure

Info: Robin F-RE. Runway 18, wind 170 at 5 kts, Cleared for takeoff, When airborne contact Lausanne Approach on 118.830

Pilot: Cleared for takeoff on Runway 18, will contact Lausanne Approach when airborne on 118.830 Robin F-RE.

...

Pilot: Lausanne Approach, Robin F-GSRE 2000 feet climbing 2500 departing to the south, please activate VFR flight plan.

App: Robin F-GSRE your VFR flight plan is open, please remember to close your flight plan on arrival, have a good flight.

Team 7: LFLG to Chamois (IT)

ATERRISSAGE A VUE
Visual landing

Ouvert à la CAP
Public air traffic
09 SEP 2021

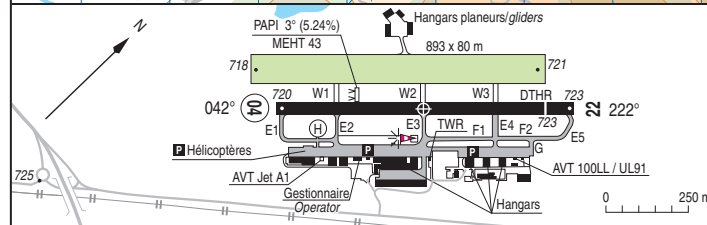
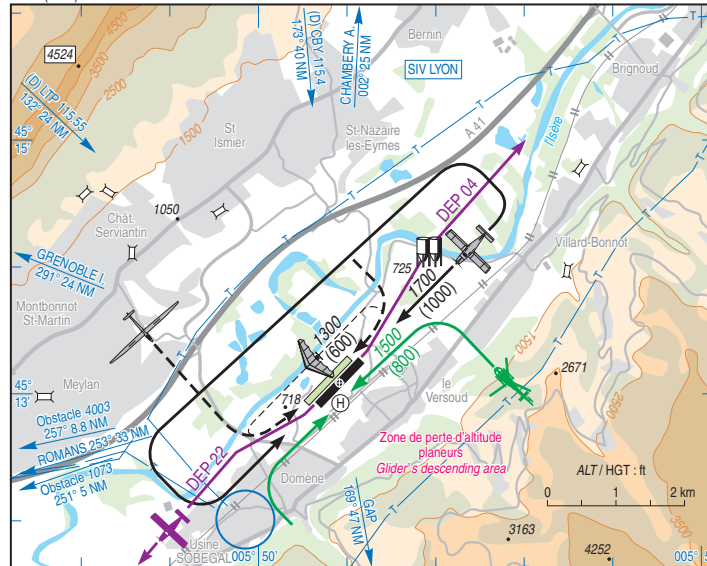
GRENOBLE LE VERSOUD
AD 2 LFLG ATT 01



ALT AD : 724 (26 hPa)
LAT : 45 13 05 N
LONG : 005 50 55 E

LFLG
VAR : 1°E (15)

ATIS 125.230 ☎ 04 85 88 10 17
APP : NIL
TWR : 121.000
GND (SOL) : 121.655



RWY	QFU	Dimensions	Nature Surface	Résistance Strength	TODA	ASDA	LDA
04	042	900 x 30	Revêtu Paved	6.3 TRSI	900	900	900
22	222				900	900	815

Aides lumineuses : NIL Lighting aids : NIL

Team 7: LFLG to Chamois (IT)

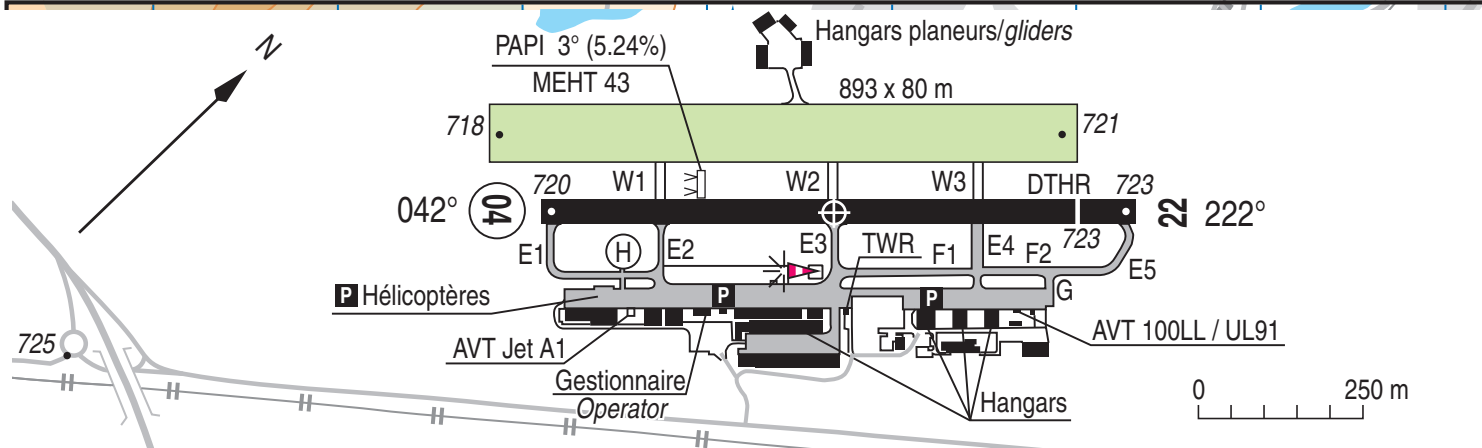
ATTERRISSAGE A VUE
Visual landing

Ouvert à la CAP
Public air traffic
09 SEP 2021

GRENOBLE LE VERSOUD
AD 2 LFLG ATT 01

	ALT AD : 724 (26 hPa) LAT : 45 13 05 N LONG : 005 50 55 E	LFLG VAR : 1°E (15)
--	--	-------------------------------

ATIS 125.230 ☎ 04 85 88 10 17
 APP : NIL
 TWR : 121.000
 GND (SOL) : 121.655



RWY	QFU	Dimensions <i>Dimension</i>	Nature <i>Surface</i>	Résistance <i>Strength</i>	TODA	ASDA	LDA
04	042	900 x 30	Revêtue <i>Paved</i>	6.3 TRSI	900	900	900
22	222				900	900	815

Aides lumineuses : NIL

Lighting aids : NIL

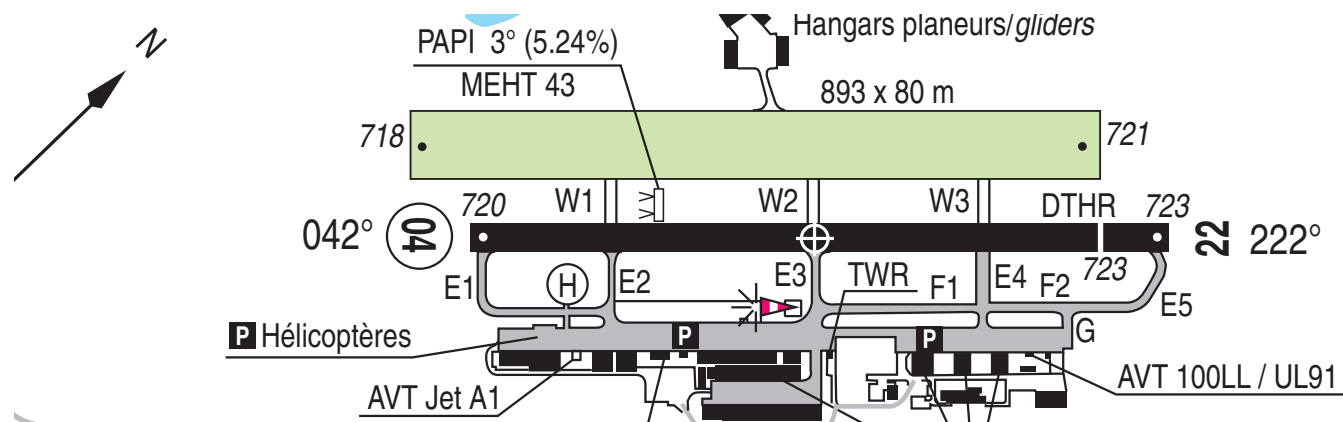
Team 7: LFLG to Chamois (IT)

FlightPlan from LFLG to Chamois Italy

FGSCD Jodel D 140 VFR Departure LFLG Date 10.07 0900 UTC
Speed 90 Knots Visual Level

Route LFLG-LFLJ-Col du Mont-LIMW-Chamois (45°50'07''N –
007°37'17''E) Flying Time 60mn Crossing Border 0940 UTC
Diversion field LFLJ-LFHM-LIMW 4 hours fuel 2 POB Color
airplane Blue and White Pilot Trauchessec 0608589744 .

Team 7: LFLG to Chamois (IT)



ATIS Le Versoud : good day this is information Charlie recorded at 0730 UTC , runway in use 04 , wind 360° , 4 knots , CAVOK , temperature 14 , QNH 1030 , inform Le Versoud on first contact that you have received information Charlie .

PILOT: Le Versoud ground Jodel Mousquetaire FGSCD on the apron good morning

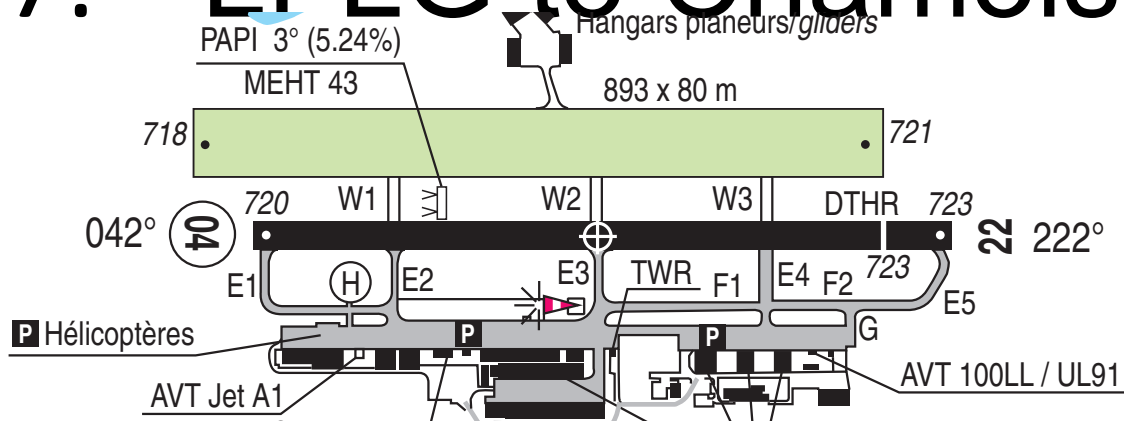
GROUND: Jodel FGSCD Le Versoud Ground pass your message

PILOT: Jodel FGSCD with information Charlie, 2 POB request taxi to runway 04 for VFR departure with flight plan to Chamois Italy

GROUND: FGSCD taxi to holding point E1 runway 04 , contact Tower when ready for departure on 121.0

PILOT: Taxi to runway 04 holding point E1 contact tower when ready for departure on 121.0 FGSCD

Team 7: LFLG to Chamois (IT)



- PILOT: Le Versoud tower Jodel FGSCD at holding point E1 Runway 04 ready for departure
- TOWER: Jodel FGSCD Runway 04 cleared for take off , wind calm , report leaving frequency
- PILOT : Runway04 cleared for take off , report leaving frequency , request activate my flight plan FGSCD
- TOWER: Flight plan activated FGSCD
- PILOT: FGSCD passing péage de Brignoux to leave your frequency
- TOWER: FGSCD you can leave my frequency
- PILOT: I leave your frequency thank you , good day FGSCD

Session Planning (*revised*)



17 March	The FCL055 Rating, Course structure, Presentation of Participants, Information resources, ATIS, AWOS and ASOS
24 March	Formation of flight crews, ATIS practice, Sample preflight briefings
31 March	Preflight Briefings
7 April	Radio Communication rules and practice for Taxi and Departure
14 April	ACD – General Assembly (no session)
21 April*	Departure Airfield briefings. Radio Practice for departure and taxi
28 April	Phraseology for Take-off Landing and flying the pattern, Radio Practice
5 May	Enroute Position Reporting, Radio Practice
12 May	Abnormal and Emergency Situation, Human Factors, war stories
19 May	Arrival, Landing, Fuel and Parking, Arrival Briefings, Radio Practice:
26 May	FCL 055 VFR practice Exam

*Jim in Texas