



Aéro Club du Dauphiné

Aviation English Master Class

Session 10

James Crowley

<http://crowley-coutaz.fr/jlc/FCL055>

Session Planning (*aspirational*)

- 20 October The FCL055 Rating, Course structure, Presentation of Participants, Information Resources, Sample Practice Flight
- 27 October Form Flight Crews, ATC Overview, Numbers, ATIS Structure, Sample Flight Briefing.
- 3 November Complete Flight Crews, Flight Briefings Crews 1, 2, 3, 6
- 10 November Flight Briefings Crews 4, 5, 7, Taxi Clearances
- 17 November Aviation Terminology, Departure Clearances, Sample Departure Script
- 24 November Practice Scripts for Startup, Taxi and Departure (all crews).
- 1 December Flying the Pattern, Sample Script.
- 8 December Pattern Practice with Individual Crew Scripts.
- 15 December Enroute and Arrival, Flight Plans, Sample Enroute scripts
- 22 December Practice Enroute and Arrival Scripts for each Crew**
- ~~29 December Practice Enroute and Arrival Scripts, Inflight Emergencies,~~
- 05 January Finish scripts, Inflight Emergencies, FCL 055 VFR test preparation.
- (22 and 29 December sessions may be rescheduled to early January).

Homework for today's session



Prepare the flight plan and write out the complete dialog for opening the flight plan, taxi clearance, departure, enroute and arrival for your flight. Send me a copy for use in our next lesson. Each team will read their dialog at our next session. If time permits we will also trade war stories of inflight incidents and emergencies.

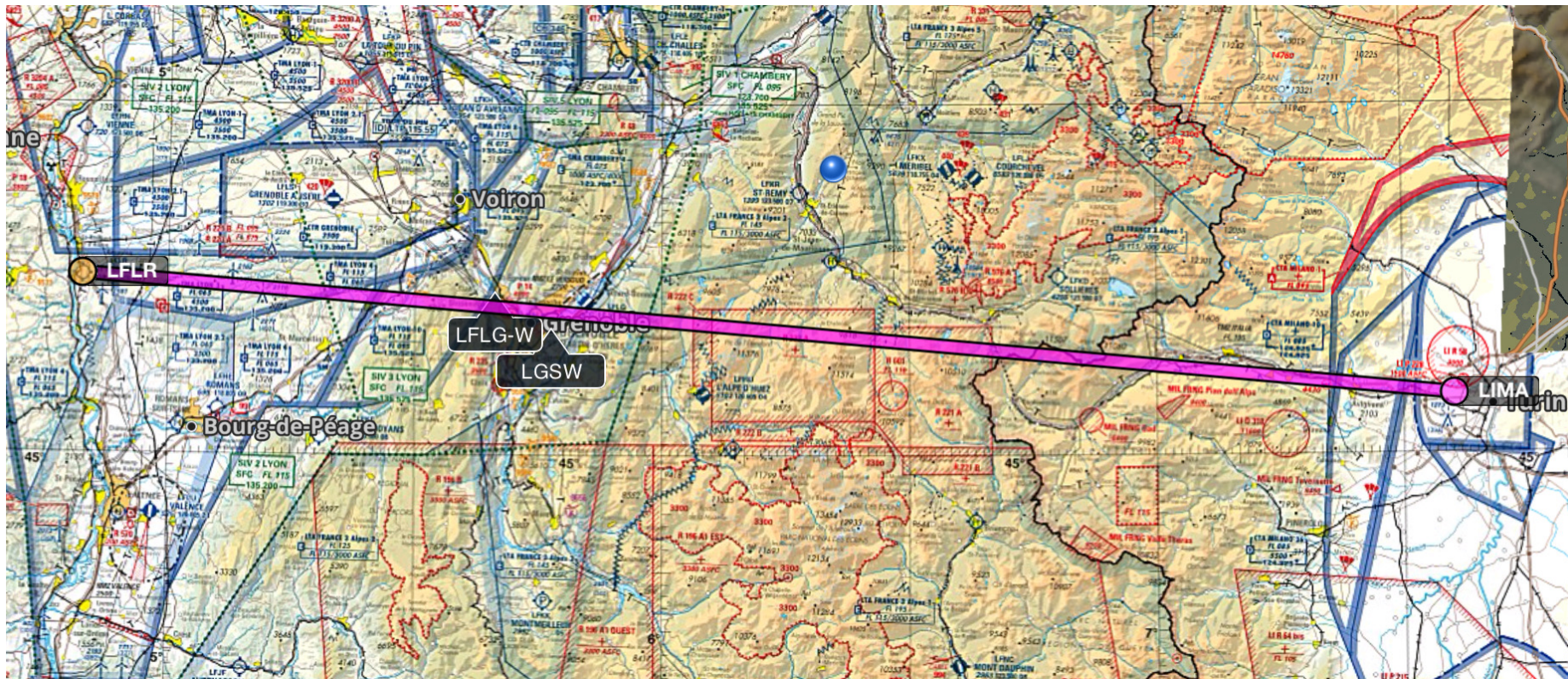
ACD MasterClass Flight Crews



Crew	Names	Call Sign	Type	Departure	Destination	notes
1	Eléonore Guénot	F-AZCC	Pilatus P2	LFLR	LIMA	3/11
	Ulysse Cugat					
2	Antony Barclais	ACD DA42	DA42	LFLG	LSGS	3/11
	Gabriel Faivre					
3	Sam Durand	N7275R	C172 S	LFLB	LFGL	3/11
	Anton Telechev					
4	Marc Alexandre	F-HPRA	DA 62	LFLS	LFML, LEGE	10/11
	Benjamin Leiba					
5	Bernard Bigot	F-HGPC	DR 401	LFLG	LEBB	10/11
	Philippe Brun					
6	Lucas Lebreton	F-GTPT	DR 400	LFLG	LEGE	3/11
	Dragos Dumitriu					
7	Jerome Coudurier	F-GSRE	DR 400	LFLG	LIRJ	10/11
	Marie Baird					

Crew 1: LFLR – LIMA with F-AZCC

Eléonore Guénot , Ulysse Cugat



ENROUTE - contact Lyon Info

- P: Lyon Info, Pilatus P2 F-AZCC Good Morning
- SIV: F-AZCC, good morning, pass your message
- P: Pilatus P2 F-AZCC, 2POB, request activation of VFR flight plan from Saint Rambert destination Torino LIMA, 7500 ft, request transit via Le Versoud
- SIV: F-CC, roger, Flight Plan activated, squawk 1234, maintain 7500 fr, call back le Versoud in sight
- P: squawk 1234, maintaining 7500 ft will call back Le Versoud in sight F-CC
- P: Lyon Info, le Versoud in sight to leave the frequency F-CC
- SIV: F-CC, squawk 7000, have a good flight
- P: squawk 7000, have a good day F-CC

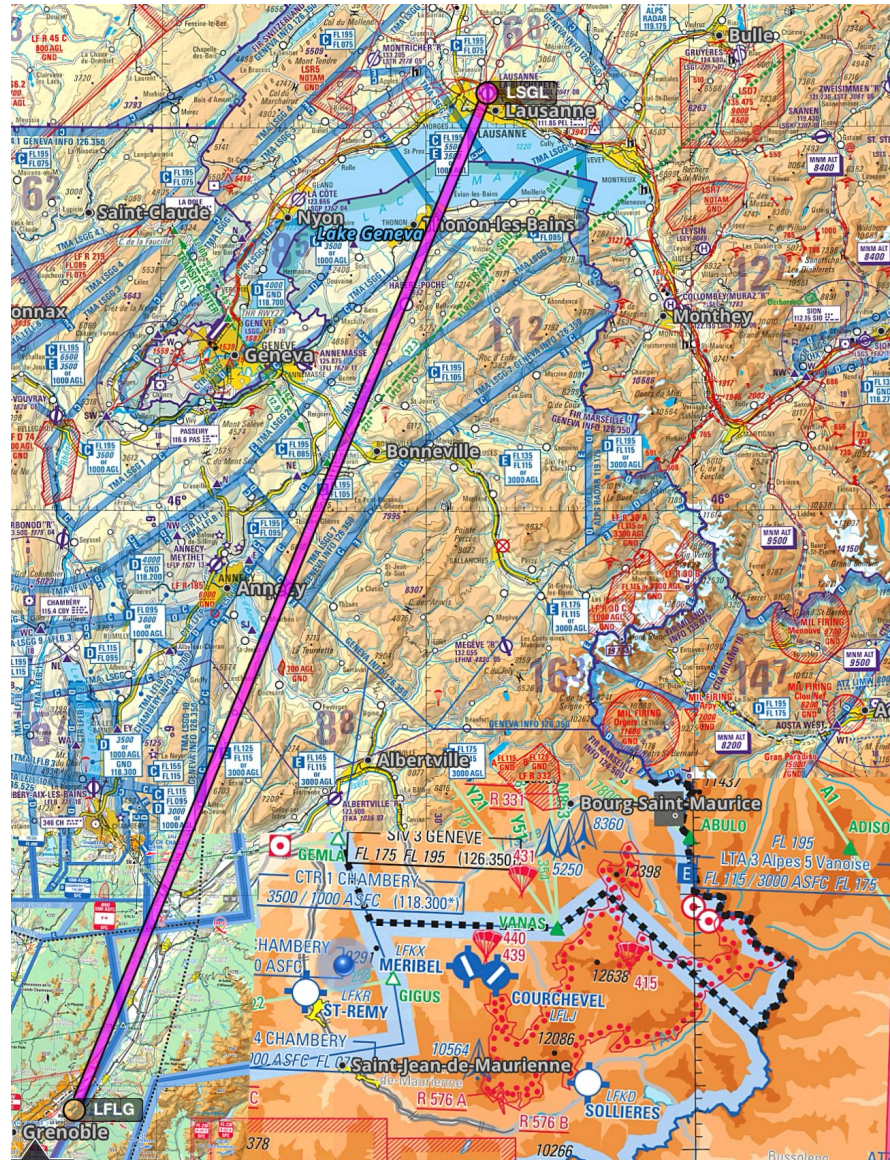
INBOUND Torino Aeritalia LIMA AFIS

- P : Aeritalia info , good morning, F AZCC
- A : F AZCC , good morning, pass your message
- P : F AZCC , Pilatus P2 , VFR flight with flight plan, from Grenoble le Versoud LFLG, destination Torino Aeritalia LIMA, MANW1 estimated time 5 minutes
- A : F-CC, roger, runway 2 8 , wind 025 degrees, 10 knots, QNH 1025 , QFE 990, report Rivoli MASW
- P : Runway 2 8 , QNH 1025, will report Rivoli MASW, F-CC
- P: Aeritalia info, F-CC at Rivoli MASW to join downwind runway 28, for the grass strip
- A: F-CC, report right hand downwind runway 2 8
- P: will report right hand downwing runway 2 8, for the grass strip, F-CC

LIMA AFIS – Downwind for Landing

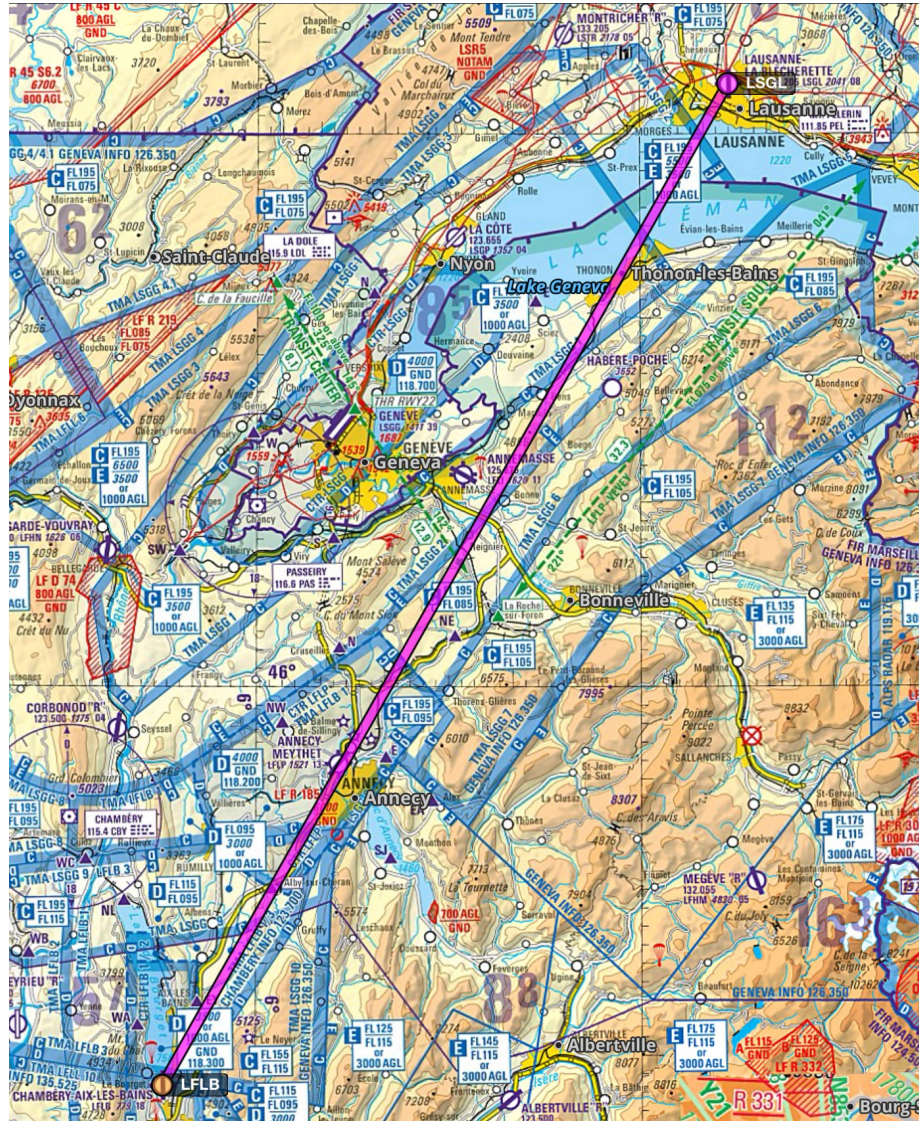
- P : Aeritalia info, F-CC right hand down wind runway 28
- A : F-CC roger , North American T6 on base, report final
- P : Traffic in sight, will report on final F-CC
- A : F-CC, runway vacated by T6
- P : Roger F-AZCC
- P : AERItalia info, F-AZCC final 2 8 grass strip
- A : F-CC roger Wind 020 degree 8 knots cleared for landing runway 2 8 grass strip
- P : Runway 2 8 grass, landing F-CC
- P : Runway vacated F-CC
- A : F-CC report apron
- P : Aeritalia info, F-CC on the apron, leaving frequency, good bye
- A : F-AZCC good bye

Antony Barclais, Gabriel Faivre



Crew 3: LFLB – LSGL with N1725R

Sam Durand, Anton Telechev



FLIGHT PLAN PLAN DE VOL			
PRIORITY Priorité <<= FF =>	ADDRESSEE(S) Destinataire(s)		
FILING TIME Heure de dépôt	ORIGINATOR Expéditeur		
SPECIFIC IDENTIFICATION OF ADDRESSEE(S) AND/OR ORIGINATOR Identification précise du(des) destinataire(s) et/ou de l'expéditeur			
3 MESSAGE TYPE Type de message <<= (FPL	7 AIRCRAFT IDENTIFICATION Identification de l'aéronef N 7275 R	8 FLIGHT RULES Règles de vol - V	TYPE OF FLIGHT Type de vol G <<=
9 NUMBER Nombre 01	TYPE OF AIRCRAFT Type d'aéronef C172	10 EQUIPMENT Équipement SGY / <<=	
13 DEPARTURE AERODROME Aérodrome de départ LFLB			
15 CRUISING SPEED Vitesse croisière N 124			
LEVEL Niveau A 055			
TIME Heure 1400 <<=			
ROUTE Route EY DCT ALBY DCT E DCT NE DCT LSGL			
16 DESTINATION AERODROME Aérodrome de destination LSGL			
TOTAL EET Durée totale estimée HR MIN 0035			
ALTN AERODROME Aérodrome de dégagement LFLI			
2ND ALTN AERODROME 2 ^e aérodrome de dégagement LFLP <<=			
18 OTHER INFORMATION Renseignements divers			
SUPPLEMENTARY INFORMATION (NOT TO BE TRANSMITTED IN FPL MESSAGES) Renseignements complémentaires (À NE PAS TRANSMETTRE DANS LES MESSAGES DE PLAN DE VOL DÉPOSÉ)			
19 ENDURANCE Autonomie E / 0500			
PERSONS ON BOARD Personnes à bord P / 002			
EMERGENCY RADIO Radio de secours UHF VHF ELT R / U V E			
SURVIVAL EQUIPMENT/Équipement de survie POLAR Désert Maritime Jungle S / WA MA JA			
JACKETS/Gilets de sauvetage LIGHT Lampes FLUORES Fluores J / WA F WA			
DINGHIES/Canots NUMBER Nombre CAPACITY Capacité COVER Couverture COLOUR Couleur WA / WA WA			
AIRCRAFT COLOUR AND MARKINGS Couleur et marques de l'aéronef A / WHITE WITH BLUE AND GREY LONGITUDINAL STRIPS			
REMARKS Remarques WA			
PILOT-IN-COMMAND Pilote commandant de bord C / DURAND			
FILED BY / Déposé par			
SPACE RESERVED FOR ADDITIONAL REQUIREMENTS Espace réservé à des fins supplémentaires			

LFLB – LSGL with N1725R - Start up

Pilot: Chambéry Tower, Cessna N7275R on the apron. Good day!

ATC: N7275R, Chambéry Tower. Pass your message.

Pilot: N7275R, with information Golf, VFR flight plan to Lausanne LSGL. Ready for startup.

ATC: N-5R, roger, please standby.

ATC: N-5R, Chambéry Tower. Ready to copy?

Pilot: Ready to copy, N-5R.

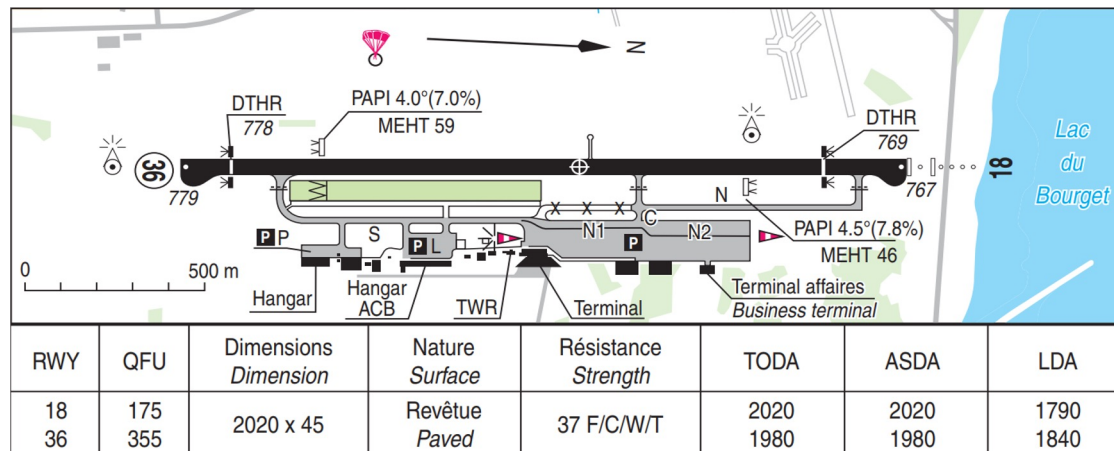
ATC: N-5R, is cleared to LSGL as filed, altitude 5500 feet, squawk 7301, clearance void if not activated within 5 minutes.

Pilot: N-5R, is cleared to LSGL as filed, altitude 5500 feet, squawk 7301, clearance void if not activated within 5 minutes.

ATC: N-5R, Read back is correct, call back when ready to taxi.

Pilot: Will call back when ready to taxi, N-5R.

Departure



Pilot: N-5R, ready to taxi.

ATC: N-5R, taxi via taxiway S to holding point S runway 36, report ready for departure.

Pilot: Taxiing via taxiway S to holding point S, will report ready for departure, N-5R.

Pilot: N-5R at holding point S runway 36. Ready for departure.

ATC: N5R, wind 010 at 5 knots, line up runway 36, cleared for takeoff, report at EY.

Pilot: Lining up runway 36 and departing, will report at EY, N5R.

Pilot: N-5R, at EY, 2500feet, climbing.

ATC: N-5R, contact Chambéry Info on 123.7. Good day!

Pilot: Contacting Chambéry Info on 123.7, good day!

Pilot: Chambéry Info, from Cessna N7275R, at EY, good day!

ATC: N-5R, identified, report at E.

Pilot: Will report at E, N-5R.

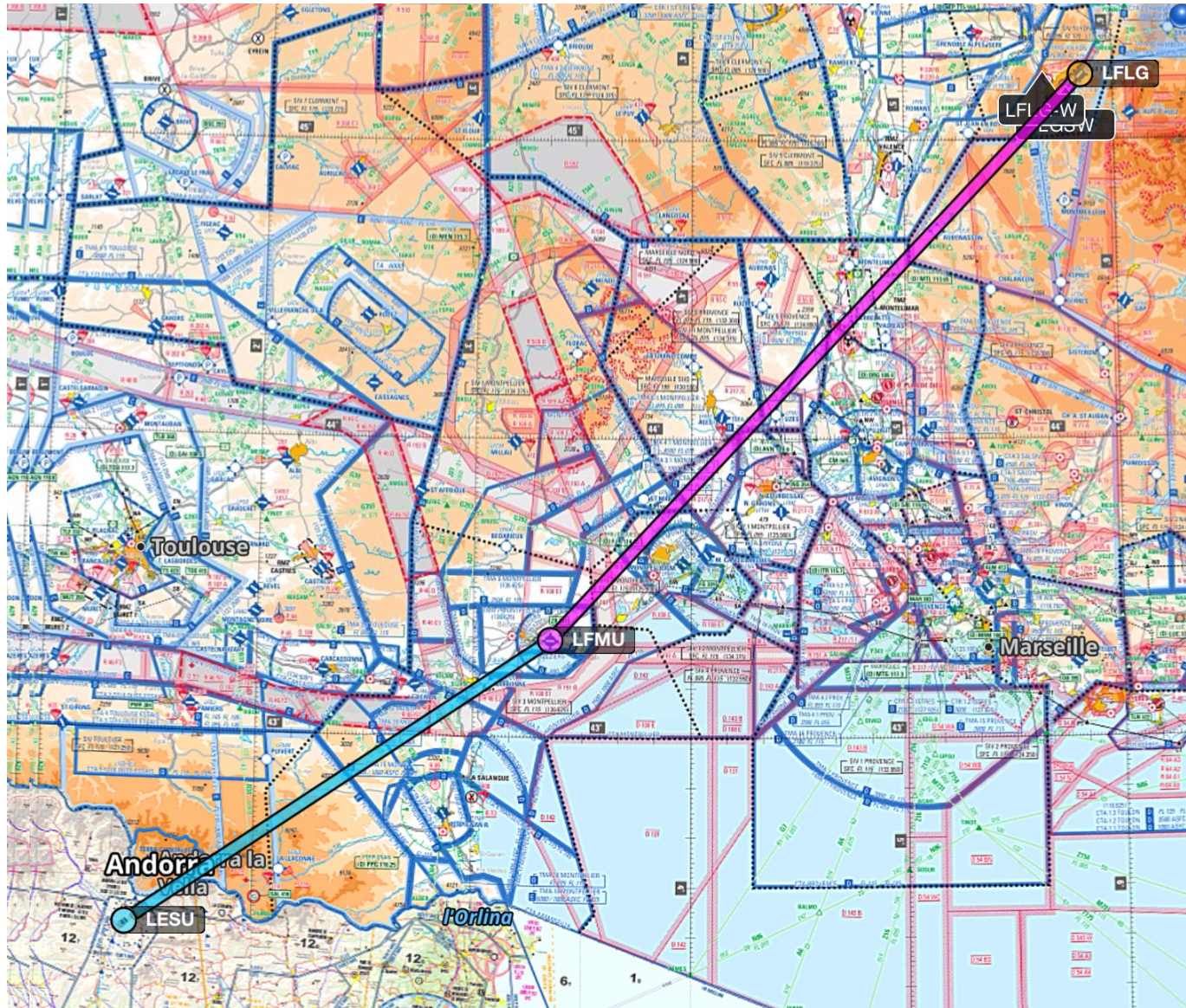
Crew 4: LFLS – LFML – LEGE with F-HPRA

Marc Alexandre, Benjamin Leiba



Crew 5: LFLG –LFMU– LESU with F-HGPC

Bernard Bigot and Philippe Brun

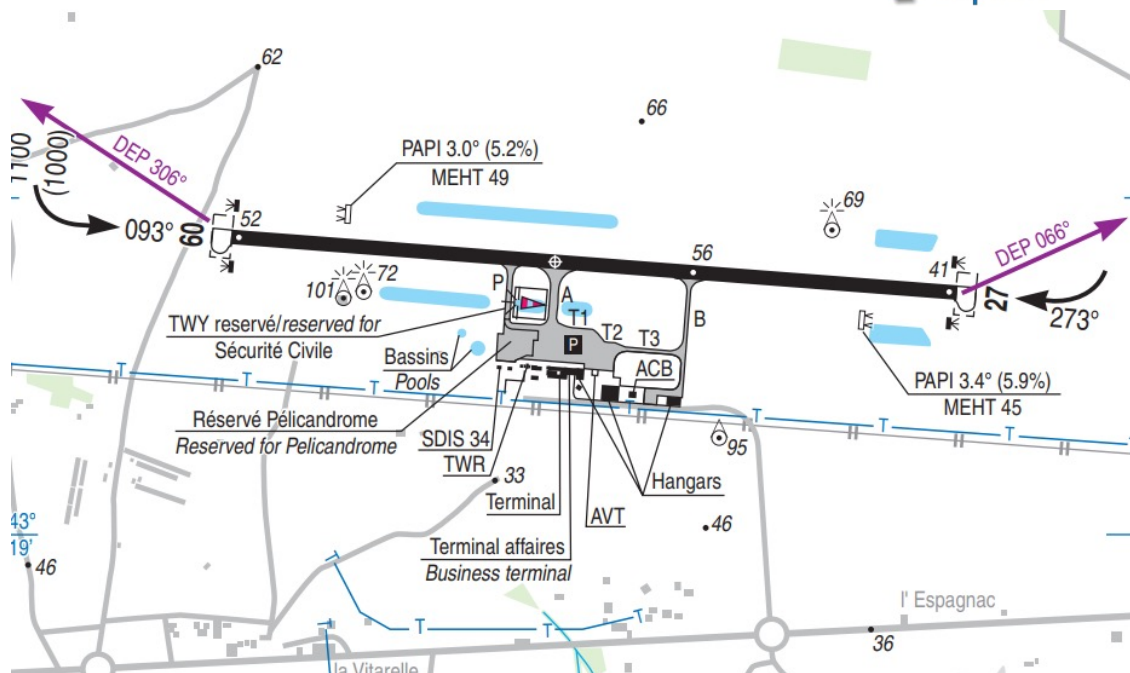


PRIORITÉ / Priority << = FF →		DESTINATAIRES / Addressees << =	
HEURE DE DÉPÔT / Filing time << =		EXPÉDITEUR / Originator << =	
IDENTIFICATION PRÉCISE DES DESTINATAIRES ET/OU DE L'EXPÉDITEUR / Specific identification of addressees and/or originator			
3 TYPE DE MESSAGE / Message type << = (FPL		7 IDENTIFICATION DE L'AÉRONEF / Aircraft identification — F H G P C	
9 NOMBRE / Number — 0 1		10 ÉQUIPEMENT & POSSIBILITÉS / Equipment & capabilities 10-a SYZO 10-b S	
13 EMPLACEMENT DE DÉPART / Departure location — L F M U		15 VITESSE CROISIÈRE / Cruising speed — N 0 1 0 0	
16 AÉRODROME DE DESTINATION / Destination aerodrome — L E S U		17 AÉRODROME DE DÉGAGEMENT À DESTINATION / Destination alternate aerodromes 1 ^{re} / 1 st L F M P 2 ^{ème} / 2 nd L E G E	
18 RENSEIGNEMENTS DIVERS / Other information — DOF/251217 NAV/GPS TYP/DR400 RMK/+33661242550			
19 RENSEIGNEMENTS COMPLÉMENTAIRES (À NE PAS TRANSMETTRE DANS LES MESSAGES DE PLAN DE VOL DÉPOSÉ) / Supplementary information (NOT TO BE TRANSMITTED IN FPL MESSAGES)			
AUTONOMIE / Endurance — E / 0 4 2 0		PERSONNES À BORD / Persons on board → P / 0 0 2	
ÉQUIPEMENT DE SURVIE / Survival equipment → S /		GILETS DE SAUVETAGE / Jackets → J /	
CANOTS / Dinghies → D / 0 0		COULEUR ET MARQUES DE L'AÉRONEF / Aircraft colour and markings A / BLEU ET BLANC	
NOMBRE / Number → 0 0		REMARQUES / Remarks → N /	
CAPACITÉ / Capacity → 0 0 0		PILOTE COMMANDANT DE BORD / Pilot-in-command C / BERNARD BIGOT	
COUVERTURE / Cover →) << =	
COULEUR / Colour →) << =	
DÉPOSÉ PAR / Filed by		ESPACE RÉSERVÉ À DES FINS SUPPLÉMENTAIRES / Space reserved for additional requirements	

Departure Beziers Vias (LFMU)

Airport information

Runway 09/27 2000mX46m



Departure Beziers Vias (LFMU)

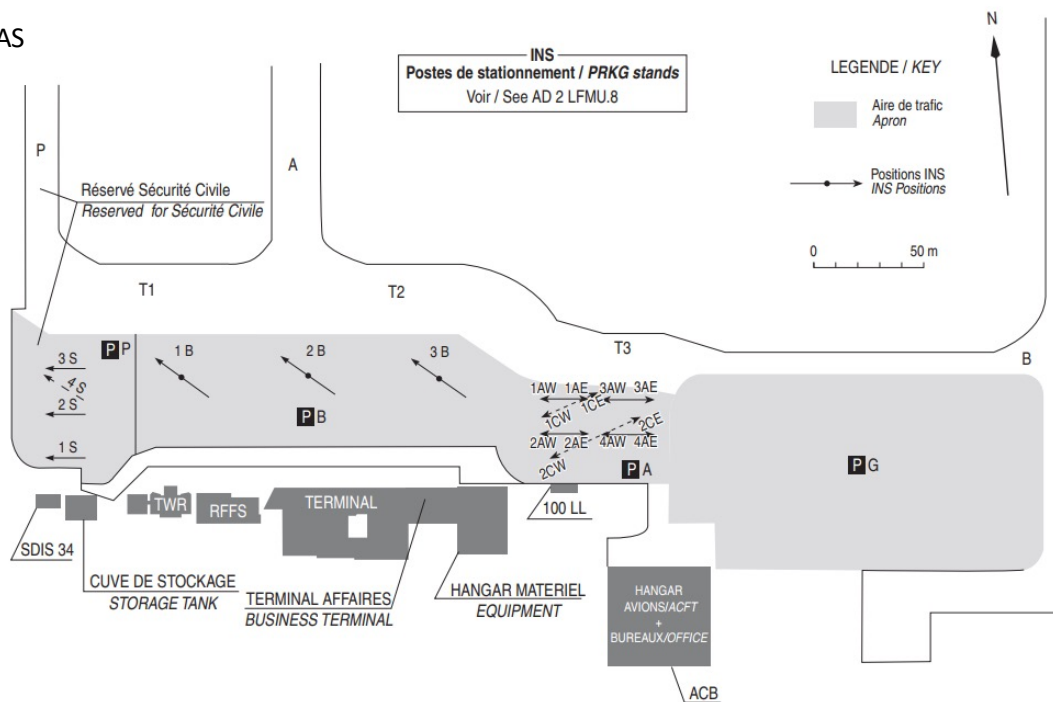
Airport information

Apron G for GA

Entrance between red and white markers

Exit between yellow markers

Fuelling : AVGAS 100LL, JET A-1 (Self service 24 HR AVGAS
100LL available , TOTAL card only)



Departure Beziers

Pilot: Beziers Tower, ROBIN F-GTPC, Goodday

Tower F-GTPC, Beziers Tower, Pass your message

Pilot: ROBIN F-GTPC, on Golf Apron, VFR departure to LESU, Request activation of our flight plan, and Taxi instructions for departure, with information Alpha

Tower: F-PC standby.

Tower: F-PC taxi to Holding point Bravo, Report when ready

Pilot: Taxiing to Holding point Bravo and report when ready, F-PC

Pilot: Beziers Tower, F-PC Holding point Bravo, Ready for departure on Runway 27.

Tower: F-PC, at Holding point B, Backtrack Runway 27, Cleared for take-off runway 27. Report overhead CG.

Pilot: Backtracking Runway 27 from Holding point B, will depart Runway 27 and will report overhead CG [at altitude?], F-PC

Pilot: F-PC, overhead CG, 3000ft climbing FL 60

Tower: F-PC contact Montpellier info on 136.625. have a good flight

Pilot: will contact Montpellier info on 136.625. F-PC

Inflight

- Pilot: Montpellier info, ROBIN F-GTPC, Goodday (contacting Montpellier Info on 136.625)
- info: F-GTPC, Montpellier info, Pass your message
- Pilot: ROBIN DR400, 2 POB, outbound Beziers Vias, Inbound Andorra LESU under flight plan , passing CG Beziers 1500', transponder 7000, request climbing 3500' F-GTPC
- info: F-GTPC squawk 7523, QNH 1023, maintain altitude untill further notice
- Pilot: 7523, maintaining 1500' F-GTPC
- info: F-GTPC , climb to 3500' approved F-GTPC,
- Pilot: 3500' approved F-GTPC
-
- Pilot: Montpellier info, F-GTPC, passing Air Galamus LF6652, request climb altitude 7500', F-GTPC
- info: F-GTPC 7500' approved, pay particular attention to the Major Sensitivity Areas en route
- Pilot: climbing 7500', MSA map updated as of march 1st, 2026 , F-GTPC

Inflight

info: F-GTPC, you're leaving our sector, contact Barcelona approach on 121.155, squawk VFR, have a good day

Pilot: 121.155, Squawk VFR, thank you and have a good day, F-GTPC

Pilot: Barcelona approach, ROBIN F-GTPC, Goodday (contacting Barcelona approach on 121.155)

approach : F-GTPC , Barcelona approach Pass your message,

Pilot: ROBIN DR400, 2 POB, outbound Beziers Vias, Inbound Andorra LESU under flight plan , passing PUMAL 7500' descending, transponder 7000, F-GTPC

approach : F-GTPC Squawk 7145, QNH 1025 maintain altitude

Pilot: 7145, maintaining altitude F-GTPC

approach : F-GTPC descent approved

Pilot : Wilco F-GTPC

approach : F-GTPC you're leaving our sector, squawk VFR and contact Andorra on 122.205 have a good day

Pilot : 122.205 thank you and have a good day, F-GTPC

Inflight

- Pilot: La Seu information , ROBIN F-GTPC, Goodday (contacting La Seu information on 122.205)
- info: F-GTPC, La Seu Information pass your message
- Pilot: ROBIN DR400, 2 POB, outbound Beziers Vias, Inbound your installations, under flight plan , 2' E of E1 4500', transponder 7000, request landing information, F-GTPC
- info: F-GTPC, runway 21 in use, QNH 1015 Wind 250 30kts expect light windshear on final, join base left hand , no bird activity spotted

Arrival La Seu d'Urgel (LESU)

Airport information

Landing strip : 03/21 1,267m x 28m

PLANO DE AERÓDROMO-OACI

422046N
0012453E

ELEV
802 m

AFIS 122.205 C

ANDORRA - LA SEU D

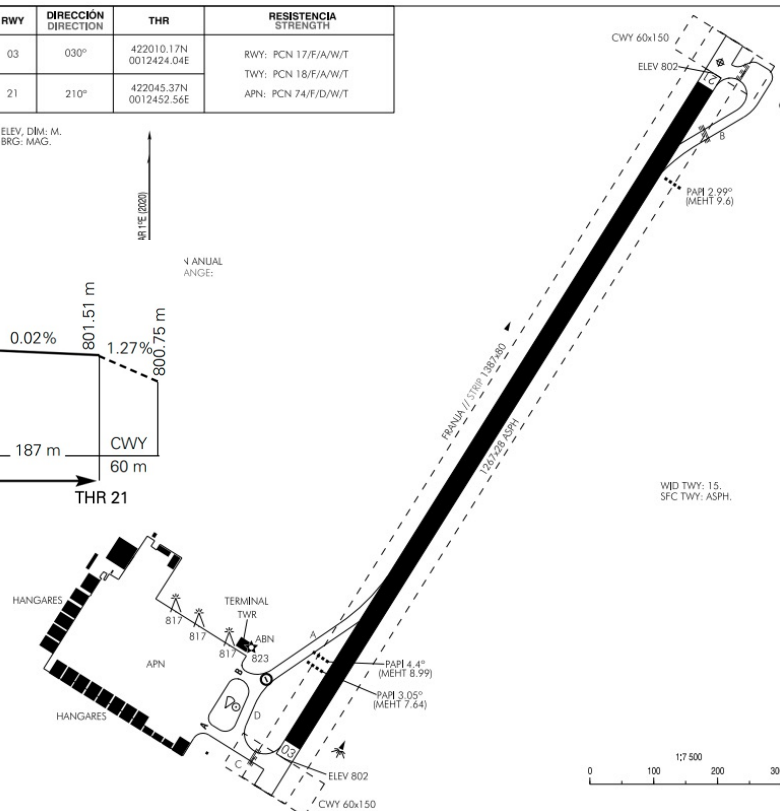
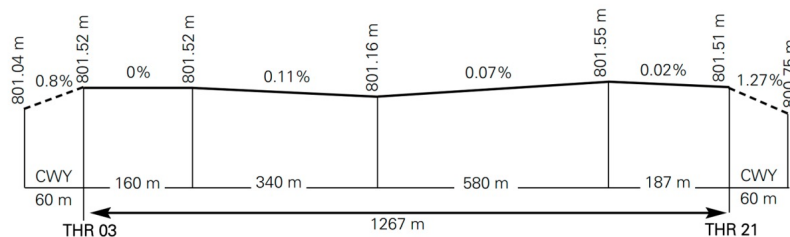
RWY	DIRECCIÓN DIRECTION	THR	RESISTENCIA STRENGTH
03	030°	422010.17N 0012424.04E	RWY: PCN 17/F/A/W/T TWY: PCN 18/F/A/W/T
21	210°	422045.37N 0012452.56E	APN: PCN 74/F/D/W/T

ELEV. DIM: M.
BRG: MAG.

181°E (2020)

4 ANNUAL
ANGLE:

12.1 Profile:



RESISTENCIA APN // APN STRENGTH: PCN 74/F/D/W/T.

APN LGT: POSTES PROYECTORES // FLOODLIGHTING POLES.

PROCEDIMIENTOS GENERALES DE RODAJE: VER AD 2-LESU CASILLA 20.
STANDARD TAXING PROCEDURES: SEE AD 2-LESU ITEM 20.

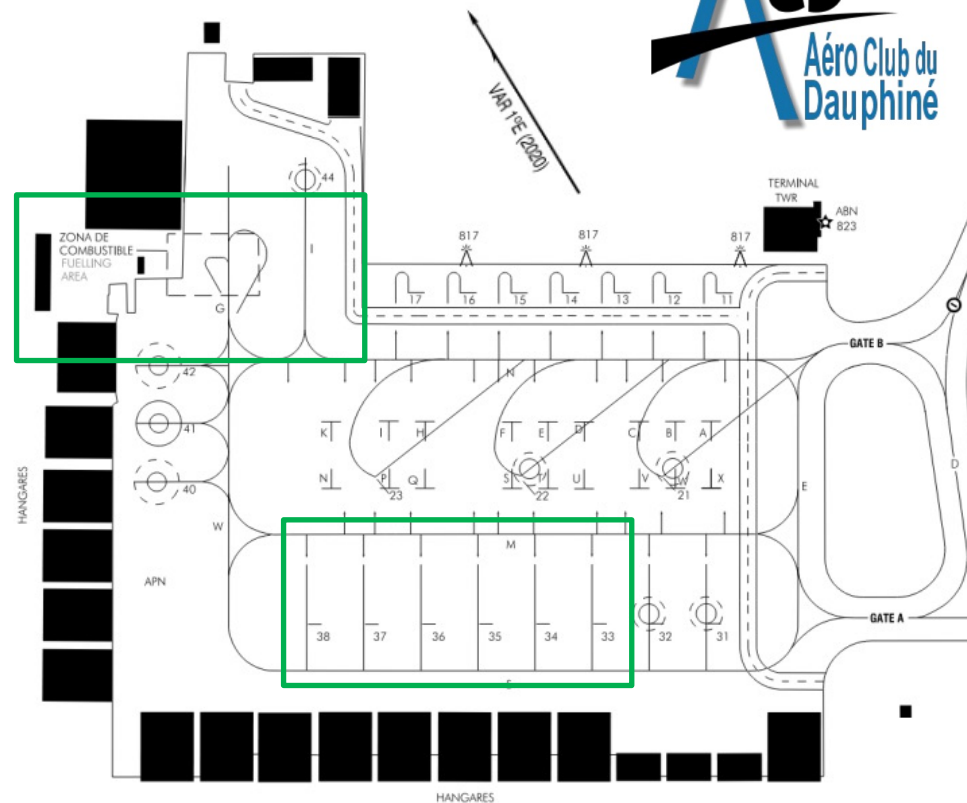
Arrival La Seu d'Urgel (LESU)

Airport information

Fuelling : AVGAS 100LL, JET A-1



PRKG	RAMP	COORD	EXIT	MAX ACFT	NOSE TO
33	-	422013.14N 0012415.25E	A	17 m (1)	S
34	-	422013.48N 0012414.48E	A	17 m (1)	S
35	-	422013.82N 0012413.71E	A	17 m (1)	S
36	-	422014.17N 0012412.93E	A	17 m (1)	S
37	-	422014.51N 0012412.16E	A	17 m (1)	S
38	-	422014.86N 0012411.39E	A	17 m (1)	S



Arrival La Seu d'Urgel (LESU)

La Seu information: F-GTPC, runway 21 in use, QNH 1015 Wind 250 30kts expect light windshear on final, join base left hand, number 1 , call final

Pilot: Will join base left runway 21 and report final, F-GTPC

Pilot: final runway 21, F-GTPC

La Seu Information : F-GTPC clear to land

Pilot: landing runway 21, F-GTPC

Pilot: runway vacated, F-GTPC

La Seu information : taxi through Gate B, Taxiway N to parking 17

Pilot: taxiing through Gate B, Taxiway N to Parking 17 F-GTPC

Pilot: At parking 17 Please close our flightplan

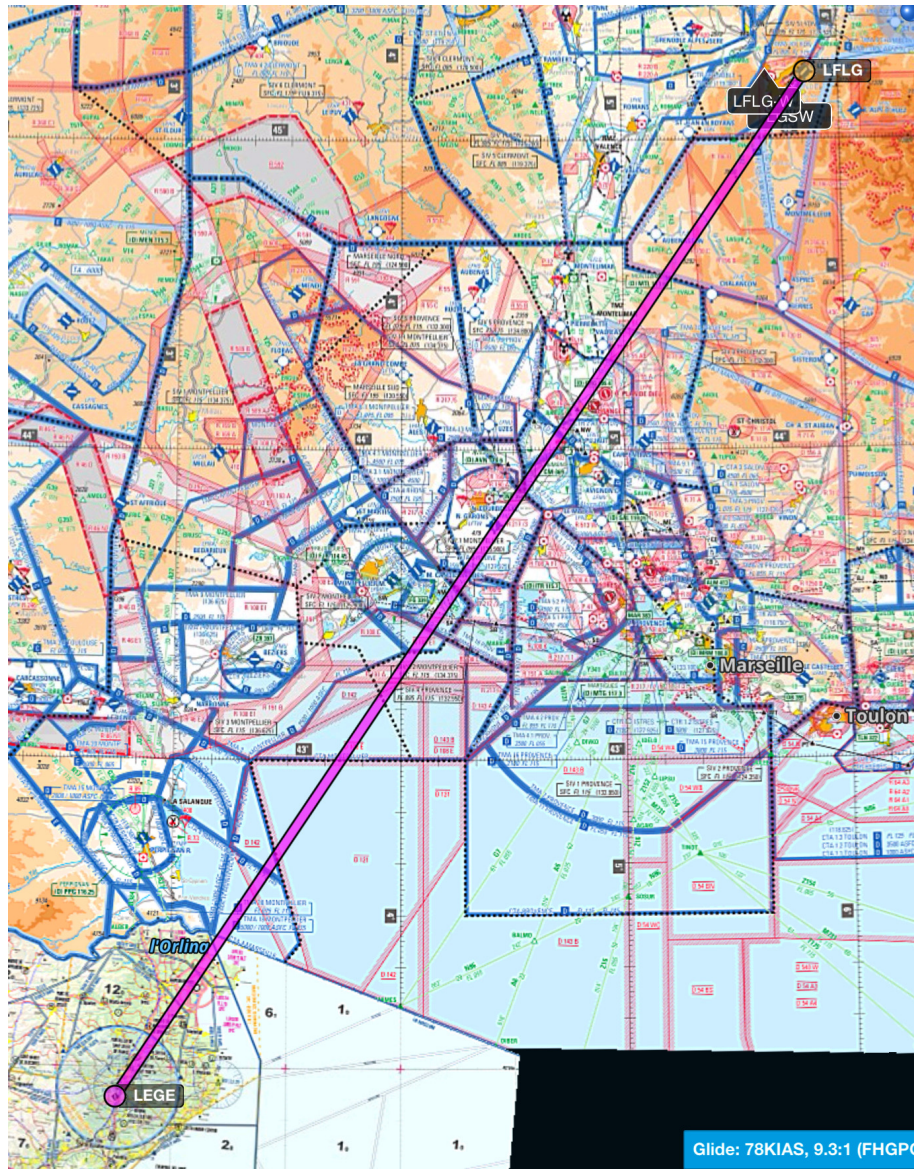
La Seu information : F-GTPC, flight plan closed at 10 after the hour

Pilot: leaving frequency , adios F-GTPC

La Seu information : F-GTPC, adios

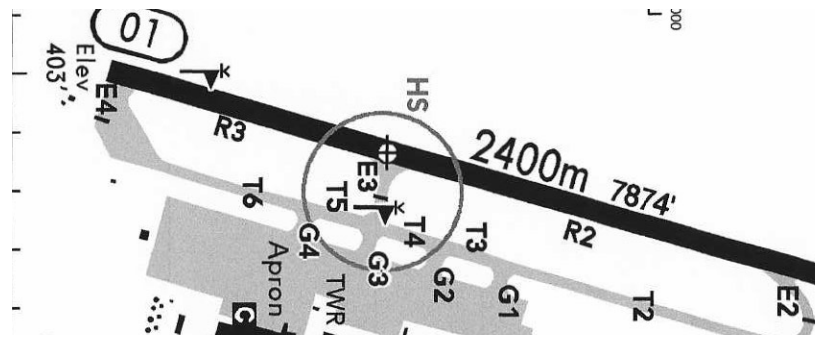
Crew 6: LFLG – LEGE with F-GTPT

Dragos Dumitriu, Lucas Lebreton



Departure from Girona (LEGE) with F-GTPT





ATIS: Good day, this is Information Bravo recorded at 1030 UTC, Runway 01 in use, Wind 010 degrees 5 knots, CAVOK, temperature 22, QNH 1027, inform Girona on initial contact that you have received information Bravo

Pilot: Girona Ground, Robin F-GTPT on stand 14 with information Bravo. Good Morning, request engine start-up

Ground: Robin F-PT, Girona Ground. Good morning. Cleared for start-up

Pilot: Starting up, F-PT

Pilot: F-PT, with information Bravo, 2 POB, VFR flight plan to Le Versoud (LFLG)

Ground: F-PT, ready to copy?

Pilot: Ready to copy, F-PT

Ground: F-GTPT, is cleared to LFLG as filed, flight level 75, contact Barcelona approach 119.105, squawk 7034

Pilot : F-GTPT is cleared for LFLG as filed, flight level 75, contact Barcelona APP 119.105, squawk 7034

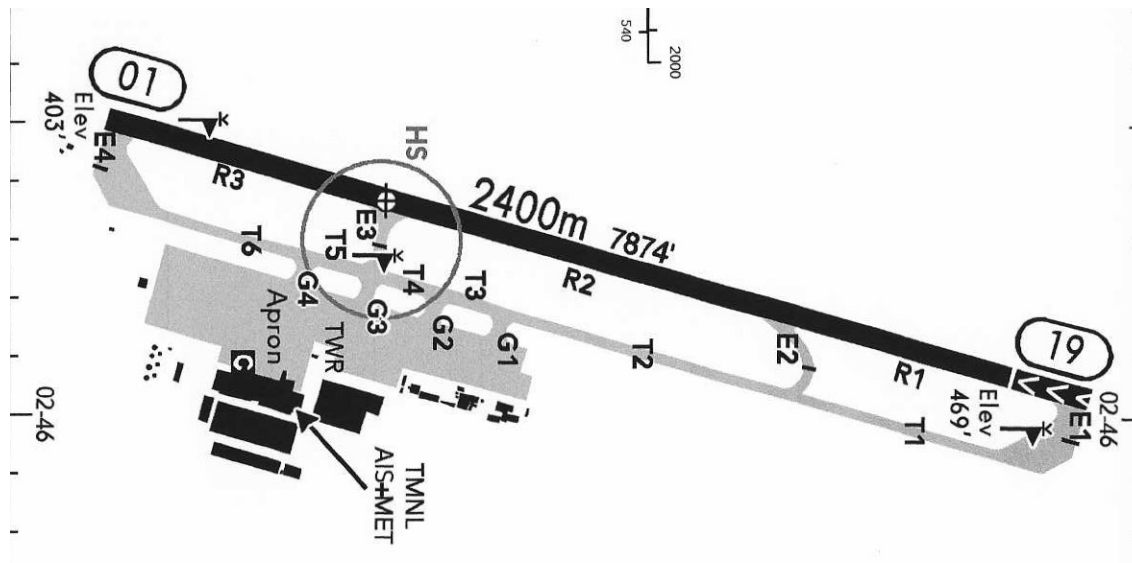
Ground: F-PT read back is correct, call back when ready to taxi

Pilot: Will call back when ready to taxi, F-PT

Pilot: F-PT, with information Bravo, ready to taxi to E4

Ground: F-PT, taxi to E4 via G3, T5, T6, contact TWR when ready on 118.505,

Pilot: taxiing to E4 via G3, T5, T6, will contact TWR when ready on 118.505, F-PT



Pilot: Girona TWR, F-PT E4 ready for departure

TWR: F-PT, maintain position, traffic on final, will call back

Pilot: maintain position F-PT

TWR: F-PT, behind traffic on final line up and wait runway 01, behind

Pilot: Behind traffic line up and wait runway 01, behind F-PT

TWR: F-PT, Cleared for take off runway 01, wind 010 degrees 5 knots, report W

Pilot: Cleared for take off runway 01, will report W, F-PT

Pilot: F-PT, 30 seconds from W 5000 feet climbing FL 75 to leave frequency, can you confirm my flight plan is active?

Tower: F-PT, flight plan activated at 11, contact Barcelona on 119.105

Pilot: Flight plan activated, will contact Barcelona on 119.105. Thank you have a good day.

Pilot: Barcelona APP, Robin F-GTPT departing W LEGE 5000 feet climbing FL 75

Barcelona APP: Robin F-GTPT, Barcelona APP, pass your message

Pilot: F-GTPT, VFR Flight plan from LEGE to LFLG departing Girona FL 75

Barcelona APP: F-PT, radar contact, proceed as filed

Pilot: proceed as filed, F-PT

...

...

Pilot: Lyon Info, Robin F-GTPT, good day, VFR flight plan from LEGE to LFLG with a request

SIV Lyon: F-PT, Lyon info, identified good day pass your message

Pilot: F-PT, passing SM, request descend 3300 feet QNH 1020

SIV Lyon: F-PT, descend 3300 feet QNH 1020, report SE

Pilot: Descending 3300 feet will report SE, F-PT

Pilot: F-PT vertical SE 3300 feet

SIV Lyon: F-PT, contact Le Versoud 121.0, squawk 7000

Pilot: contact Le Versoud 121.0, squawk 7000, have a nice day

Pilot: Le Versoud TWR, Robin F-GTPT with information Delta, VFR Flight plan from LEGE to LFLG, passing Col de Vence 3300 feet QNH,

TWR: F-PT, number 1, report final runway 04

Pilot: Number 1, will report final runway 04

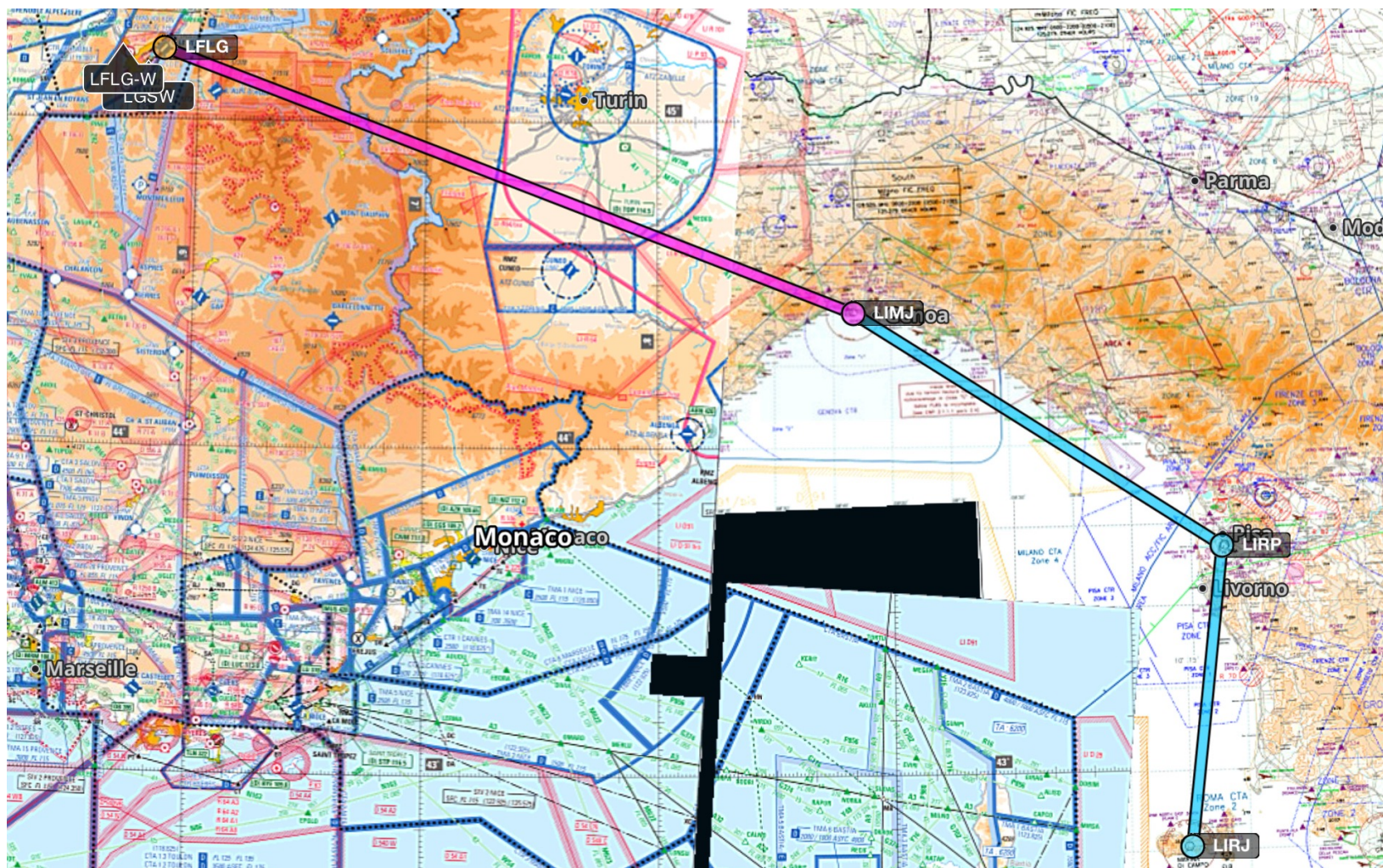
Pilot: F-PT final runway 04

TWR: F-PT, number 1, cleared to land, wind 045 degrees 8 knots

Pilot: Number 1, landing runway 04 F-PT

Crew 7: LFLG – LIRJ with F-GSRE

Jérôme Coudurier, Marie Baird



Crew 7 : LFLG – LIRJ with F-GSRE

Jérôme Coudurier, Marie Biard



Enroute

Pilot : F-RE, passing NE, 3 000 ft to leave frequency

Tower : F-RE, leave frequency, good bye

Pilot : Leaving frequency, good bye, F-RE

Pilot : F-GSRE, DR400, overhead Allevard, 5000 ft, heading 90°, direction Modane

Pilot : F-GSRE, DR400, overhead Modane, 9500 ft, direction Mont Cenis Pass

Pilot : Milano North, F-GSRE, good day

Tower : F-GSRE, Milano North, good day, pass your message

Pilot : F-RE, DR400, 2 POB, from LFLG to LIRJ vfr flight plan, 9500 ft descending just pass the border at Mont Cenis

Tower : F-RE, Transit approved, squawk 7020, report passing TOP ???

Pilot : Will report passing TOP, F-RE

Pilot : F-RE, over TOP, direction Genova, 7500 ft

Tower : F-RE, Contact Milano South, on 128.925, squawk 7000, good bye

Pilot : Will contact Milano South on 128.925, squawk 7000, good bye, F-RE

Enroute

Pilot : Milano South, F-GSRE, good day
Tower : F-GSRE, Milano South, good day, go ahead
Pilot : F-RE, DR400, 2POB, from LFLG to LIRJ vfr flight plan, leaving Milano North, 5500 ft direction LIRP
Tower : F-RE, transit approved, squawk 7025, not above 6000 ft overhead LIRP
Pilot : squawk 7025, not above 6000 ft, F-RE
Tower : F-RE, contact Pisa on 112.20, squawk 7000, good bye
Pilot : Will contact Pisa on 112.20, squawk 7000, bye bye, F-RE

Pilot : Pisa APP, F-GSRE, good day
APP : F-GSRE, Pisa APP, good day, go ahead
Pilot : F-RE, DR400, VFR flight plan, from LFLG to LIRJ, approaching CTR via West 6000 ft
Tower : F-RE, transit approved, squawk 7042, not above 6000 ft
Pilot : squawk 7042, not above 6000 ft, F-RE
Tower : F-RE, contact Marina di Campo on 123.7, squawk 7000, good bye
Pilot : Will contact Marina di Campo on 123.7, squawk 7000, good bye

Arrival

Pilot : Marina Di Campo, F-GSRE, good day
Tower : F-GSRE, Marina Di Campo, good day, pass your message
Pilot : F-RE, DR400, VFR flight plan from LFLG to LIRJ, 1500ft
2min to your airfield
Tower: F-RE, QNH 1020, runway 34 in use, report downwind 34
Pilot : QNH 102 Will report downwind 34, F-RE
Pilot : F-RE, downwind 34
Tower : F-RE, number 1, report final 34
Pilot : F-RE, final 34
Tower : F-RE, clear to land RWY 34, wind 120° at 5 Kt
Pilot : Landing RWY 34, F-RE
Pilot : Runway 34 Vacated request taxi to apron, F-RE
Tower : F-RE, taxi to apron approved
Pilot : taxiing to apron, F-RE
Pilot : F-RE, on apron to leave your frequency
Tower : F-RE, leave frequency, good bye
Pilot : leaving frequency, bye bye, F-RE

Session Planning (*aspirational*)

- 20 October The FCL055 Rating, Course structure, Presentation of Participants, Information Resources, Sample Practice Flight
 - 27 October Form Flight Crews, ATC Overview, Numbers, ATIS Structure, Sample Flight Briefing.
 - 3 November Complete Flight Crews, Flight Briefings Crews 1, 2, 3, 6
 - 10 November Flight Briefings Crews 4, 5, 7, Taxi Clearances
 - 17 November Aviation Terminology, Departure Clearances, Sample Departure Script
 - 24 November Practice Scripts for Startup, Taxi and Departure (all crews).
 - 1 December Flying the Pattern, Sample Script.
 - 8 December Pattern Practice with Individual Crew Scripts.
 - 15 December Enroute and Arrival, Flight Plans, Sample Enroute scripts
 - 22 December Practice Enroute and Arrival Scripts for each Crew
 - ~~29 December Practice Enroute and Arrival Scripts, Inflight Emergencies,~~
 - 05 January Finish scripts, Inflight Emergencies, FCL 055 VFR test preparation.**
- (22 and 29 December sessions may be rescheduled to early January).